
VIDEO PLAYER USER MANUAL

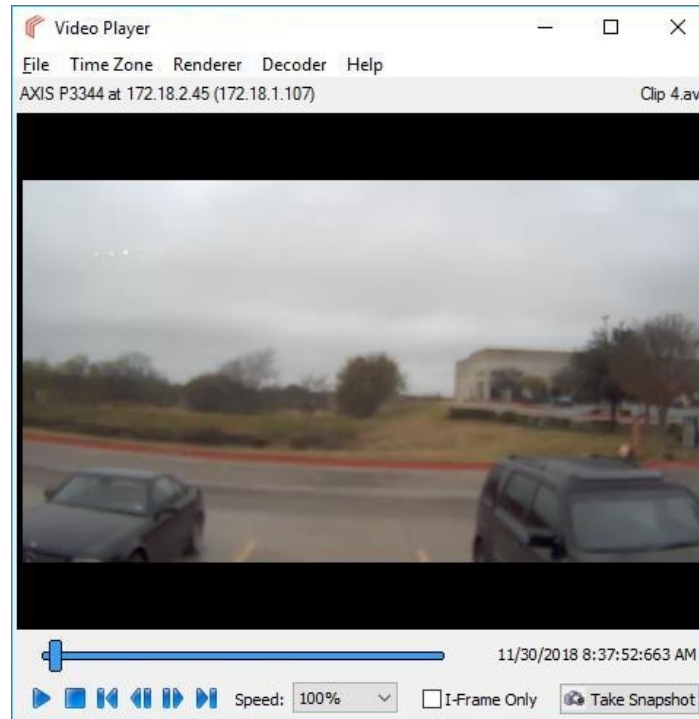
COMPLETEVIEW 20/20

TABLE OF CONTENTS

Video Player Introduction	3
System Requirements	4
Minimum Software Requirements	4
Minimum Hardware Requirements	4
Operating the Video Player	5
Exporting the Video Player	5
Operating the Video Player: Windows Desktop	5
Operating the Video Player: Session Playback	7
Operating the Video Player: Command Line	10
Interface And Controls	11
File Menu Options	11
Time Zone Menu Options	11
Renderer Menu Options	11
Decoder Menu Options	11
Help Menu Options	12
Playback Controls	12
Snapshot	13
Timeline	14
Right Click Menu	15
Right Click Menu Options - Dewarped View	15
Right Click Menu Options - View Option	16
Additional Resources	17

Video Player Introduction

The CompleteView 20/20 Video Player allows for playback of exported video and audio without the full CompleteView 20/20 application suite installed. CompleteView 20/20's Desktop Client will ask whether to export video with the Video Player, which can be used to playback and verify that no tampering has occurred with exported video clips. The Video Player allows for the playback of up to 16 video clips simultaneously.



System Requirements

Minimum Software Requirements

- Microsoft Windows 7 or later
- Microsoft Windows 10
- Microsoft DirectX 9.0 or later
- Direct3D acceleration (required for enhanced video rendering and client performance improvement. If not enabled, client will use GDI. Please contact tech support for more information regarding how to check if this feature is available.)

Minimum Hardware Requirements

- Intel Pentium 4 CPU, 2.0 Gigahertz (GHz) or faster
- 1GB of system memory
- A graphics accelerator with a minimum of 128MB of video memory and capable of displaying 1024x768 resolution in TrueColor (32-bit).

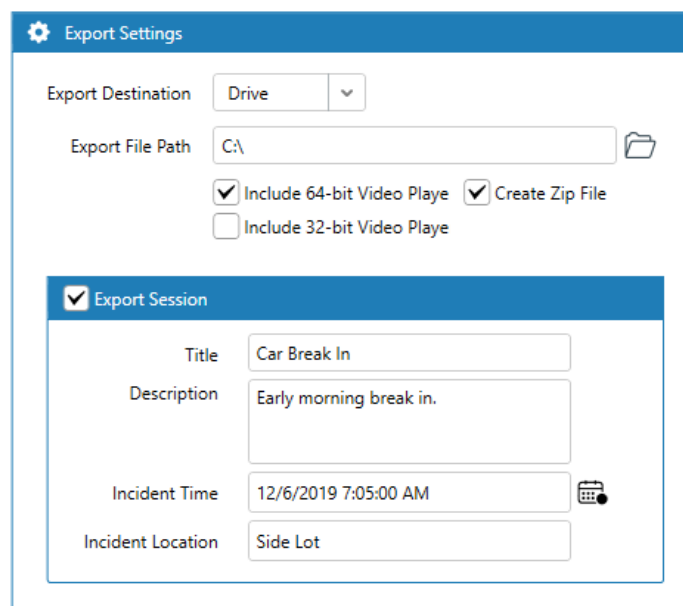
Operating the Video Player

The Video Player is obtained when exporting video from CompleteView 20/20. No installation is necessary on any computer the Video Player is run on. The Video Player can be accessed through either the Windows Desktop or via the command line.

Note: If Video Player was exported from a system that does not have version 4.6.2 or later installed, it must be run as an administrator if attempting to view an Axis fisheye clip.

Exporting the Video Player

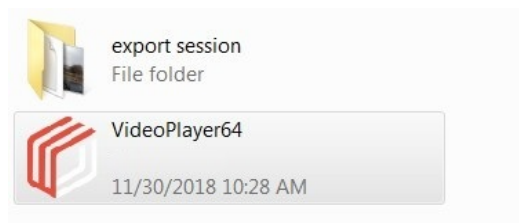
After choosing the location and length of the clip to export, select “Include 64-bit Video Player” or “Include 32-bit Video Player,” depending on your system (the 32-bit player will function in either a 32 or 64 bit OS, while the 64 bit player will only work in a 64 bit environment). For large amounts of data, “Create Zip File” may be selected, which will zip all videos into one compressed file.



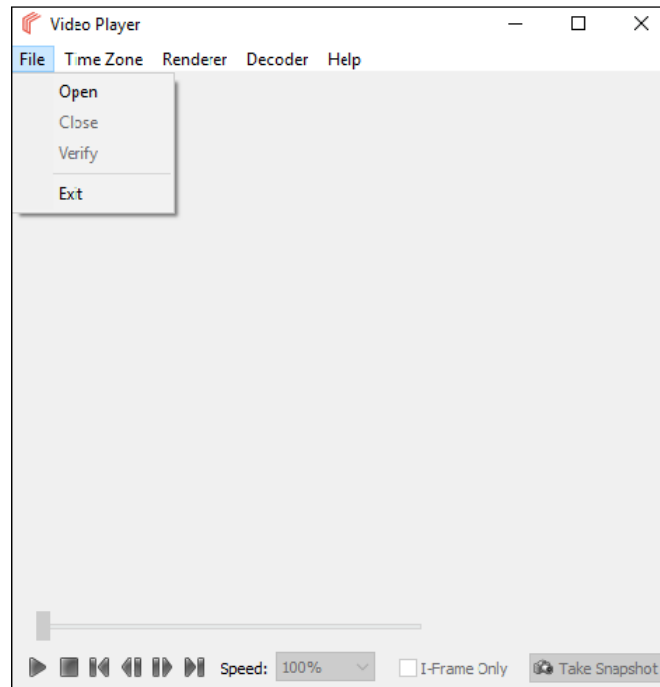
The screenshot shows the 'Export Settings' dialog box. It has a blue header with a gear icon and the text 'Export Settings'. Below the header, there are several fields and checkboxes. 'Export Destination' is a dropdown menu set to 'Drive'. 'Export File Path' is a text field containing 'C:\' with a folder icon to its right. Below these are three checkboxes: 'Include 64-bit Video Playe' (checked), 'Include 32-bit Video Playe' (unchecked), and 'Create Zip File' (checked). A section titled 'Export Session' with a checked checkbox contains four fields: 'Title' (Car Break In), 'Description' (Early morning break in.), 'Incident Time' (12/6/2019 7:05:00 AM with a calendar icon), and 'Incident Location' (Side Lot).

Operating the Video Player: Windows Desktop

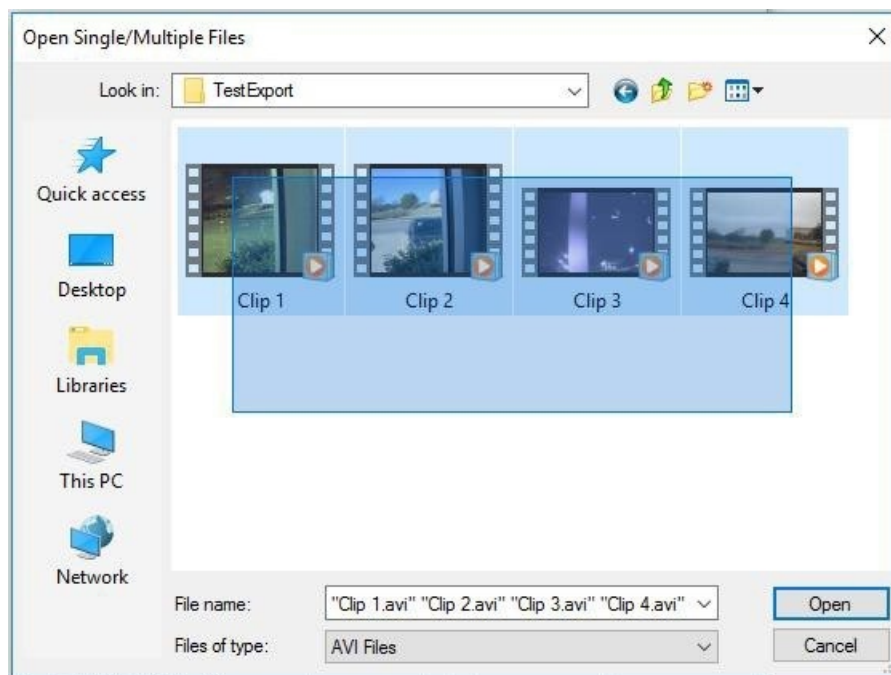
Locate the VideoPlayerXX.exe file in the folder containing the exported recordings. Launch the Video Player by double-clicking the VideoPlayerXX.exe file.



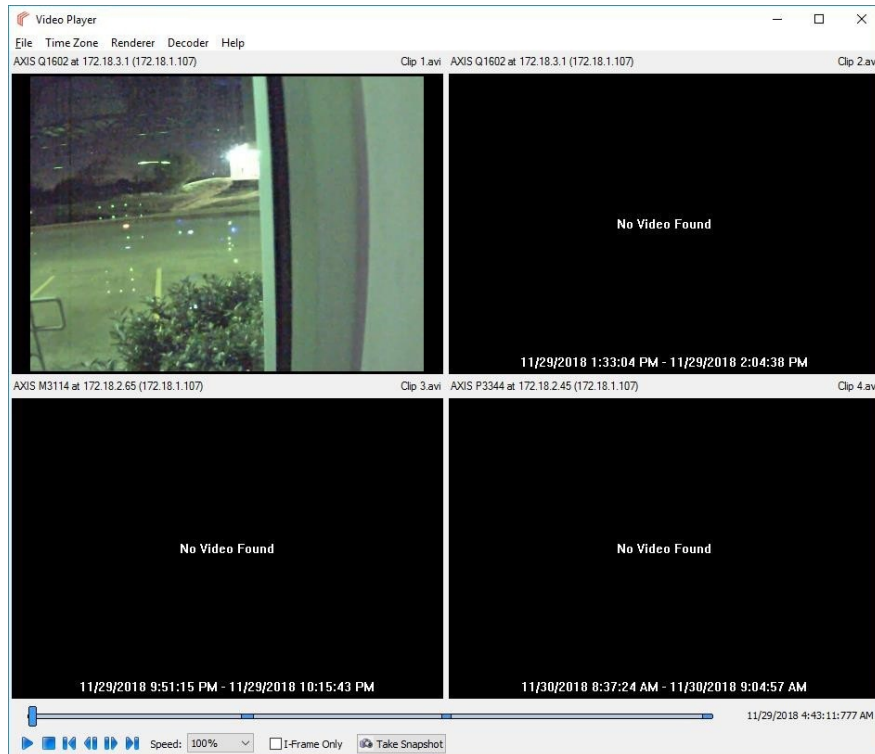
To open a video clip for playback select File -> Open.



Navigate to the folder containing the video clips. Select between 1 to 16 video clips to playback. To select multiple video clips, using the Shift or Ctrl keys to select multiple files simultaneously, or draw a box around the files you wish to select, and click Open.

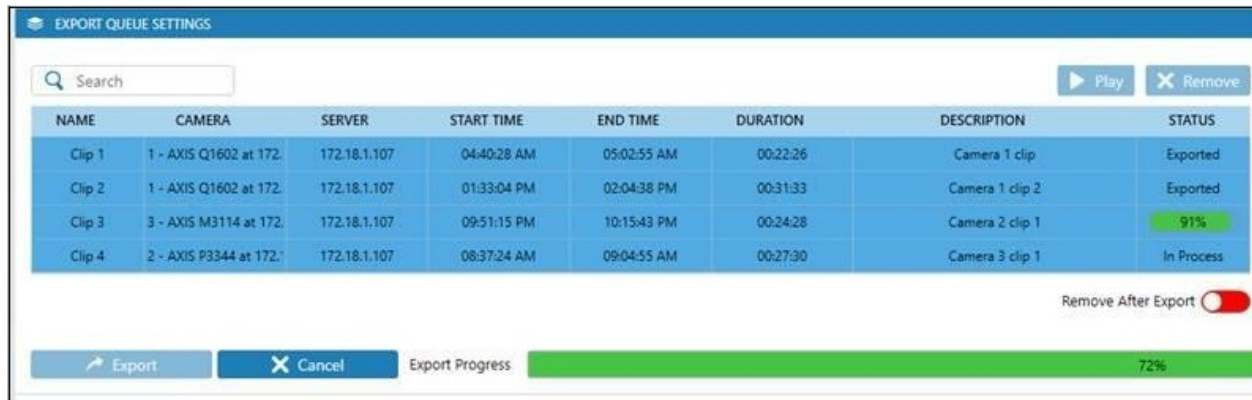


When opening multiple files, the Video Player will play the clips chronologically, simultaneously playing video from overlapping timelines, but stating “No Video Found” when no video is present at the time. Areas of the timeline that are shaded blue indicate that video is available during that time. Areas that are shaded grey indicate that no video is available at that time.

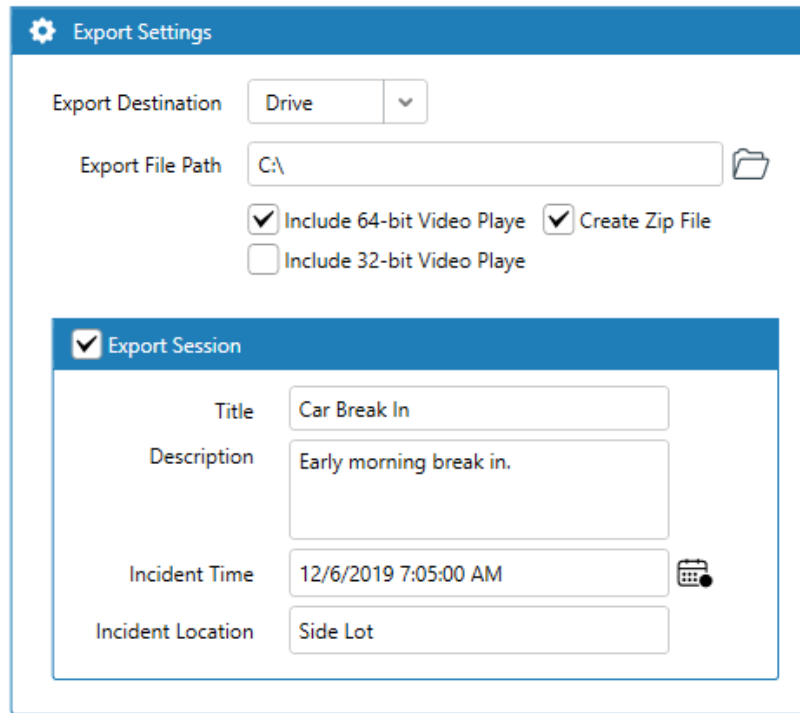


Operating the Video Player: Session Playback

An alternate to multi-file playback is Session Playback. Session Playback incorporates Description, Export Time, Exported By, Location, and Incident Time information in the playback window. Session Playback begins in the CompleteView 20/20 Export Queue.



First, select all the clips for export. Next, select the Export Session option, and complete the fields. Selecting Export Session creates the required session file (*.esf), which is placed in the same folder as the exported clips. Select Export.



Export Settings

Export Destination: Drive

Export File Path: C:\

☒ Include 64-bit Video Play ☒ Create Zip File

☐ Include 32-bit Video Play

☒ Export Session

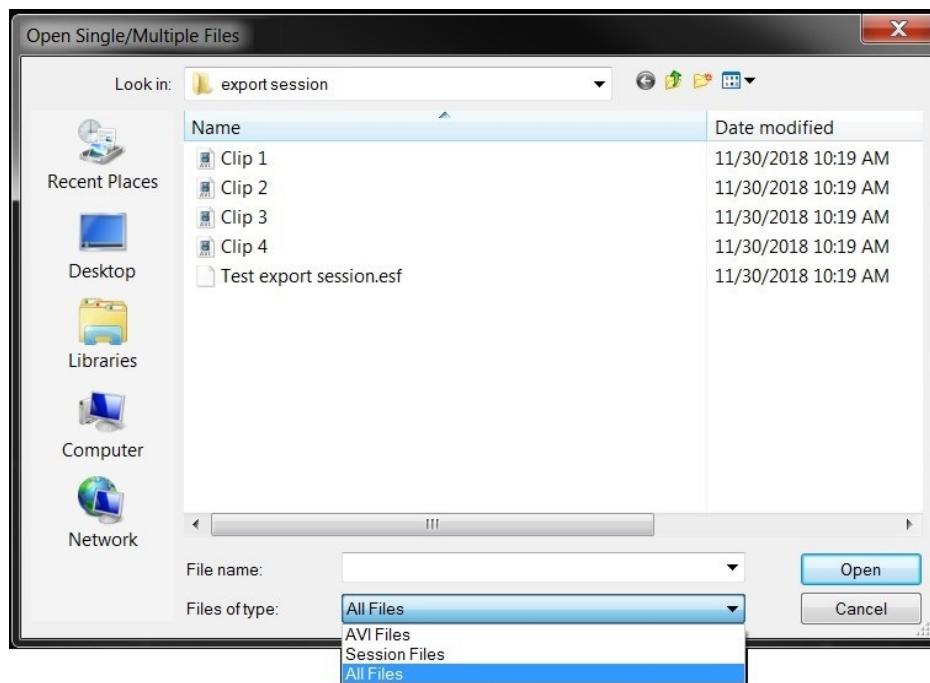
Title: Car Break In

Description: Early morning break in.

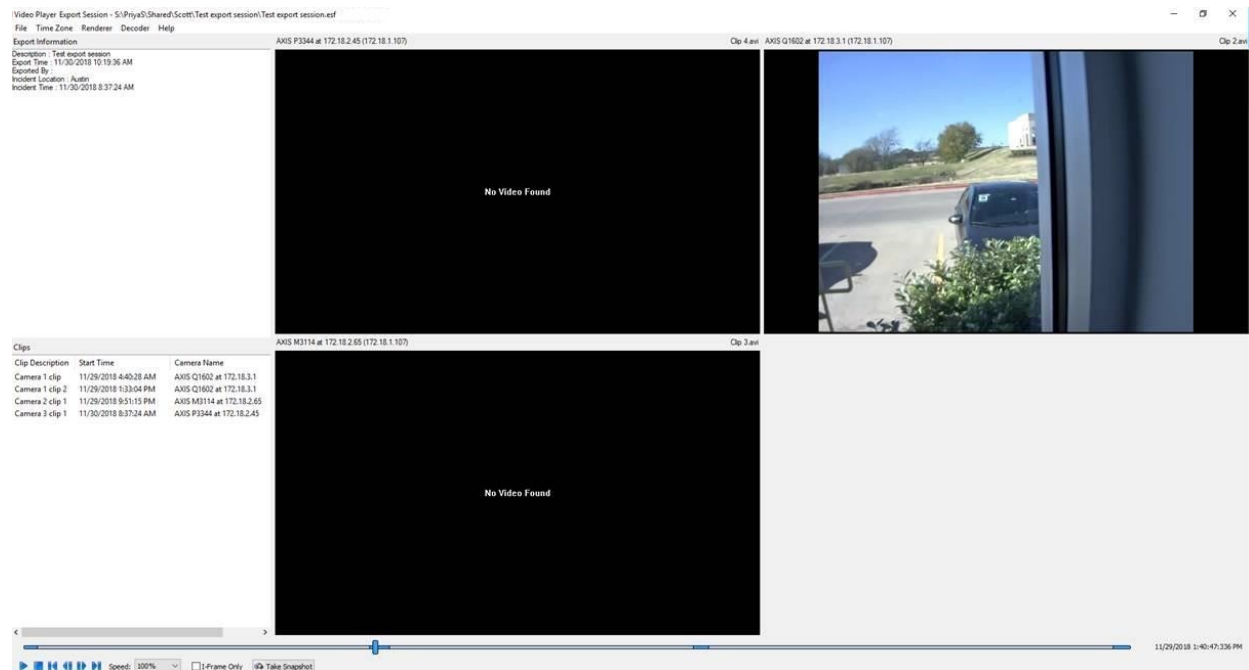
Incident Time: 12/6/2019 7:05:00 AM

Incident Location: Side Lot

Next, launch the Video Player, select File->Open, then, from the Files of Type dropdown, select All Files. This will reveal the named .esf file.



Select the .esf file, click Open, and the video player will play all exported clips, displaying their relevant information in the left panes.



Note that although there are 4 clips, you see only 3 players. This is because 2 of the clips are from the same camera, so Video Player uses the same tile.

Operating the Video Player: Command Line

The Video Player is accessible through the Windows command line. From CompleteView 20/20's home directory (C:\Program Files\Salient Security Platform\CompleteView 2020\Desktop Client\Resources>), type "VideoPlayer64 -p", followed by the absolute path of the file or files (up to 16) you wish to open. If the file names include spaces, enclose the path and file names in quotes.

```
VideoPlayer64.exe -p C:\Videos\Clip1.avi
```

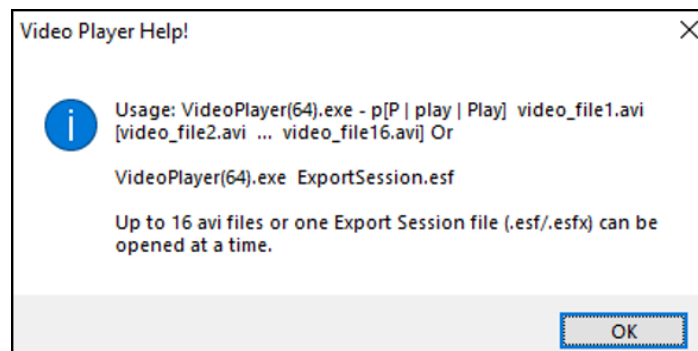
Export session files may also be opened from the command line in the same way.

```
VideoPlayer64.exe -p C:\Videos\ExportSession.esf
```

If the Video Player is already running at the time of the command line call, a new instance of the Video Player will appear. In addition, if the .avi files reside in the same directory as the Video Player, the absolute path need not be included. If both valid and invalid files are called by Video Player, the valid files will play normally, and an error message will be displayed for the invalid files.

Help can be invoked by typing the usual Windows switches, such as -h, -H, -help, -Help, /?, /h, /H or /Help

For example, typing "VideoPlayer64.exe -h" will produce:



Interface And Controls

See below for descriptions of the various menu options available in Video Player.

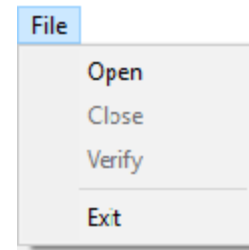
File Menu Options

Open - Select this option to open the “Open Single/Multiple Files” dialog box. Select up to 16 .AVI files to playback.

Close - Closes all currently open video clips.

Verify - Checks the digital watermark on all currently open video clips to determine whether tampering has occurred on the video clips.

Exit - Exits the Video Player.



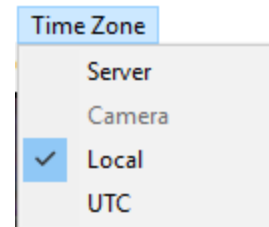
Time Zone Menu Options

Server - Sets the Time Zone for playback to CompleteView 20/20 server time.

Camera - Sets the Time Zone for playback to the camera's time.

Local - Sets the Time Zone for playback to the local time.

UTC - Sets the Time Zone for playback to UTC time.

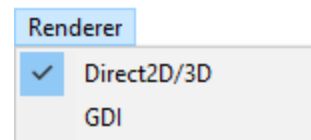


Note: Time zone information is available for clips exported from 4.6 or higher video clients only. In the absence of this information, local time will be used by default.

Renderer Menu Options

Direct2D/3D- Best for most configurations and the default selection, the Direct2D/3D renderer requires Direct3D to be present and enabled on the workstation. If Direct3D is not present, this option will be grayed out, and GDI will be automatically selected. Contact technical support for more information, if necessary.

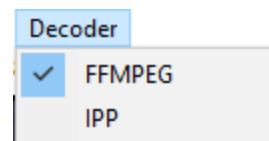
GDI-Used for legacy systems where Direct3D is not present or viable.



Decoder Menu Options

FFMPEG- Sets the Video Player to decode exported video using FFMPEG.

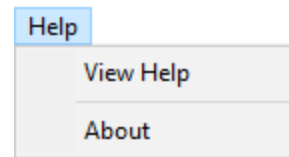
IPP-Sets the Video Player to decode exported video using IPP.



Help Menu Options

View Help- Opens this guide.

About-Displays the software version.



Playback Controls

Begins playback of the video clips.



Stops playback of all clips.



Seek to the beginning of the earliest recorded clip in the currently open group of video clips.



Step back one frame.



Step forward one frame.



Seek to the end of the newest recorded clip in the currently open group of video clips.



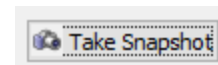
Allows selection of playback speed from 50-1600%.



Plays back only the I Frames of the selected video(s).



Launches the Snapshot dialog window.



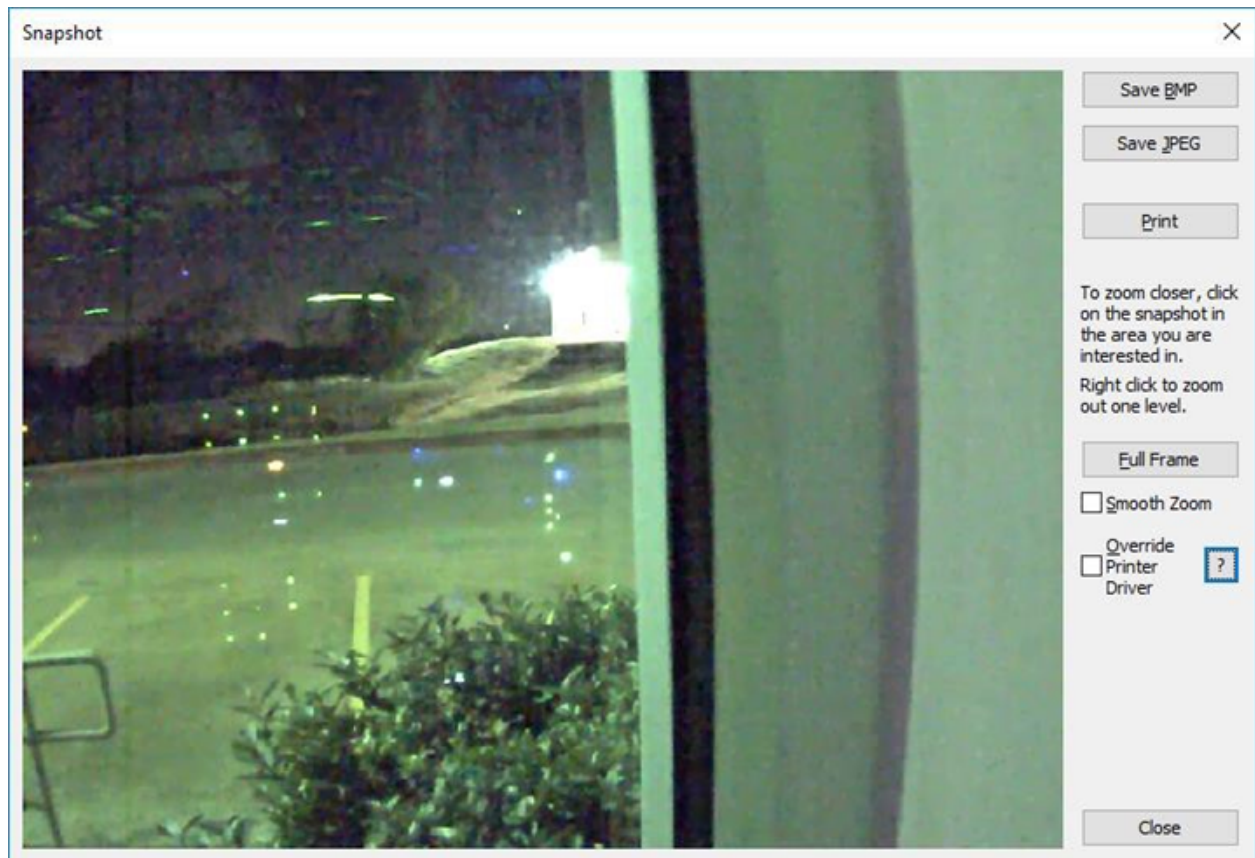
Toggle audio on or off. If a clip has recorded audio click this icon to play the recorded audio. One clip with audio can have audio playback at a time.



Note: Clips exported using CompleteView 20/20 or newer cannot be played on Video Player 4.6.1 or older.

Snapshot

Snapshot allows the capture of a still image from an exported video as either a .bmp or .jpg file. Snapshot also facilitates printing, with the option of smoothing magnified portions of the image that have been zoomed in on.



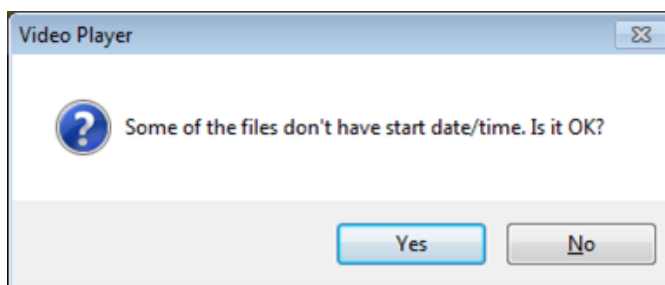
Timeline

The timeline represents the current position of playback across all the video clips currently opened. The beginning of the timeline will be set as the time of start time of the earliest recorded video clip opened. The end of the timeline will be set as the end of the newest video clip opened.

Areas of the timeline that are shaded blue indicate that video is available during that time. Areas that are shaded grey indicate that no video is available at that time.



The time and date display to the right of the timeline shows the time and date of the recording. Video clips exported using v3.7 and older may not contain information on the date & time the clip was recorded. In the event a video clip does not contain date and time information, the following warning message will display:



The timeline will change to represent the beginning and end of the longest clip being played.



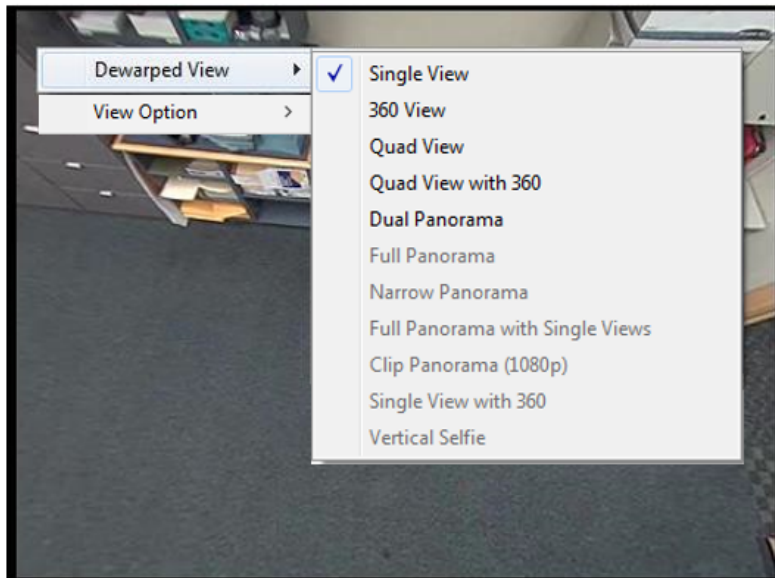
The time display will start at 0 and will count up to the end of the longest clip being played.

0:00:00.00

Digital PTZ (Pan, Tilt, and Zoom) is available during recorded video playback. Use the mouse wheel to zoom in and out, and click and drag the area for inspection in the playback screen. If the recorded video was exported from a de-warped fisheye camera, a different set of mouse inputs is utilized: Left click/drag will rotate the image in the direction of the drag, right click-/drag left will zoom in digitally, and right click/drag right will zoom out.

Right Click Menu

Video Player is able to dewarp exported clips captured by some models of panoramic cameras. Right clicking in the Video Player will reveal what dewarping options are available for a particular clip. Not all options are available on all clips.



Right Click Menu Options - Dewarped View

Single View - Displays selected dewarped field of view

360 View - Displays full 360 field of view

Quad View- Displays 4 dewarped fields of view

Quad View w/360 - Displays 3 dewarped quadrants, plus full 360 degree view

Dual Panorama - Displays 360 field of view split into halves

Full Panorama - Displays 360 field of view in panorama format

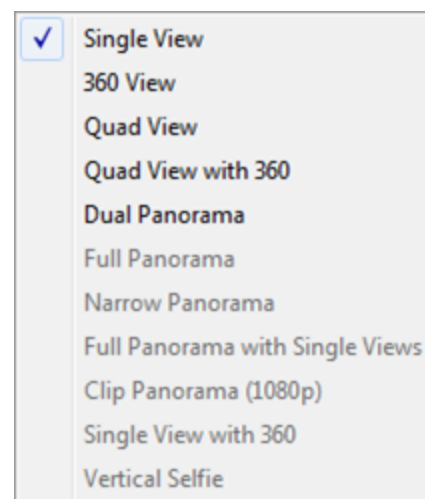
Narrow Panorama - Displays a strip of 360° or 180° field of view, depending on how the camera is mounted

Full Panorama w/Single Views - Displays 360 field of view in panorama format with selected single views superimposed on screen

Clip Panorama - Currently applies to Vivotek 1080p mode

Single View w/360- Displays a dewarped selected field of view with 360 degree view superimposed on the screen.

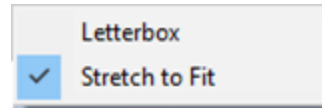
Vertical Selfie- Displays a strip of 180° field of view from bottom to top. The display ratio is fixed to 2:1.



Right Click Menu Options - View Option

Letterbox - Maintains aspect ratio by adding borders around video, if necessary

Stretch to Fit - Expands images to fit within the video tile



Additional Resources

Visit the Salient website, www.salientsys.com, for additional support and CompleteView training:

- Manuals & Documentation (<https://support.salientsys.com/hc/en-us/categories/115000292747-Knowledge-Base>) – Includes all relevant manuals.
- Online Tech Support (<https://support.salientsys.com/hc/en-us>) – Get quick access to online tech support modules that cover the most frequently asked product questions, such as “Adding IP Camera Licenses.”
- Training (<https://support.salientsys.com/hc/en-us/categories/115000302988-Training>) – we offer both online and classroom training.
 - CompleteView™ Online Certification - Register online and access the interactive training modules. Certification is valid for one year.
 - CompleteView™ Classroom Certification – Instructor led 2-day course, held in a regional classroom setting, designed to provide you with certification on CompleteView video management software. Certification is valid for two years.
 - CompleteView™ Remote Certification – Instructor directed 2-day course, that the student accesses through their own computer, designed to provide you with certification on CompleteView video management software. Certification is valid for two years.
 - Please visit the Salient website to see the training calendar, agenda, and registration. Contact training@salientsys.com for questions.

Salient Systems

4616 W. Howard Ln.
Building 1, Suite 100
Austin, TX 78728
512.617.4800
512.617.4801 Fax
www.salientsys.com

