

PowerMicro Mounts Installation Manual

CompleteView™ Version 4.5

Table of Contents

About this Manual 1

Installing the PowerMicro VESA Mount 2

Installing the PowerMicro Vertical Stand 4

Installing the PowerMicro Console with DVD-RW..... 5



Installing the PowerMicro All-in-One Mount 10

About this Manual

This manual provides detailed information on how to install the following accessories:

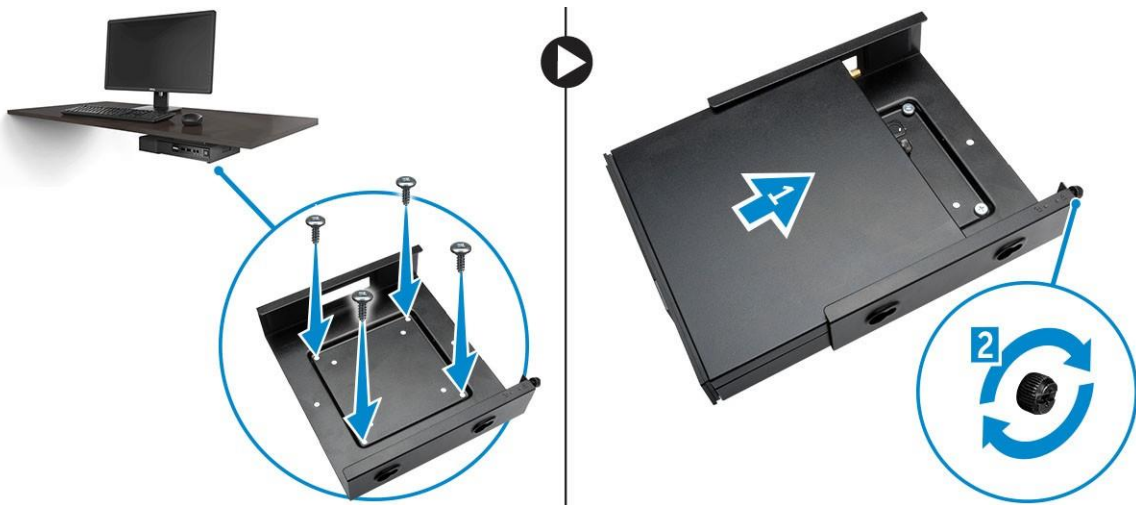
- PowerMicro VESA Mount
- PowerMicro Vertical Stand
- PowerMicro Console with DVD-RW
- PowerMicro All-in-One Mount

Installing the PowerMicro VESA Mount

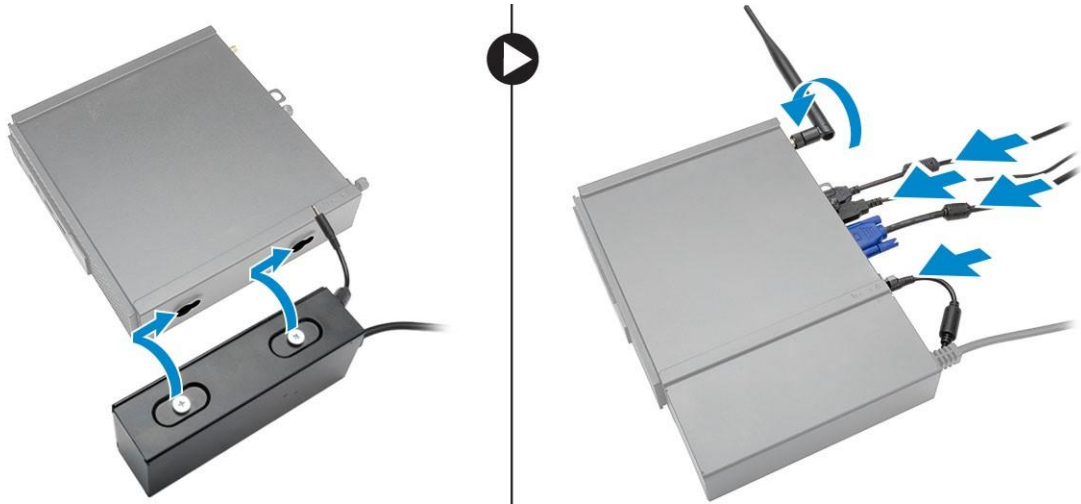
Recommended Fastener	Type	Use
	4 x L10 mm, Pan head screw	Monitor
	ST4 x L13 mm, Wood screw	Wooden table

Prerequisite: Install the power adapter.

1. Perform the following steps as shown in the illustration:
 - a) Tighten the screws to secure the VESA mount to the table.
 - b) Slide the computer into the VESA mount [1].
 - c) Tighten the screw to secure the computer to the VESA mount [2].

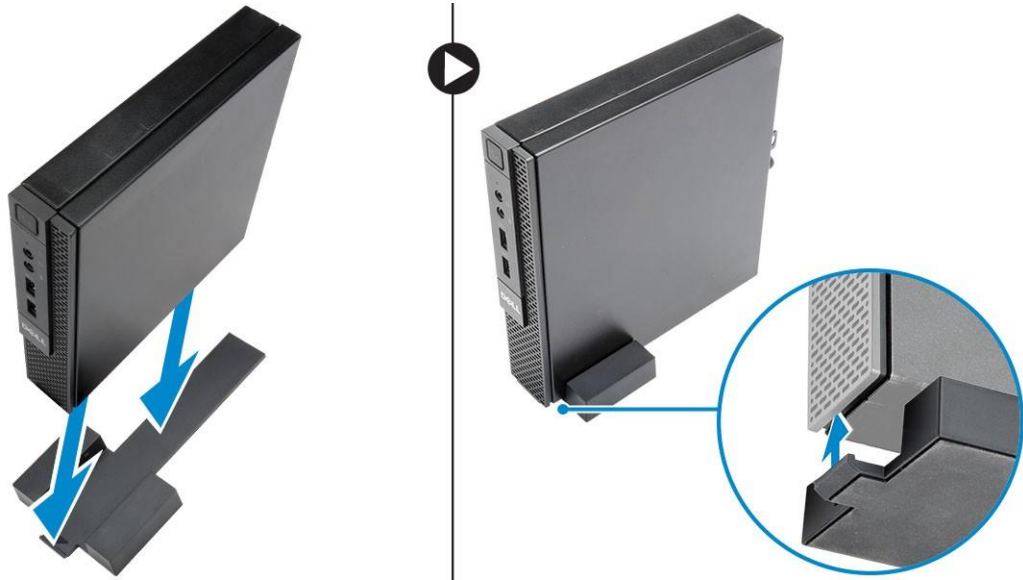


2. Perform the following steps as shown in the illustration:
- a) Slide the power adapter case through the grooves at the bottom of the VESA mount to lock it.
 - b) Connect all the cables and install antenna to the computer.




Installing the PowerMicro Vertical Stand

Align the computer on the vertical stand and ensure the tab on the vertical stand fits into the groove or notch on the system.



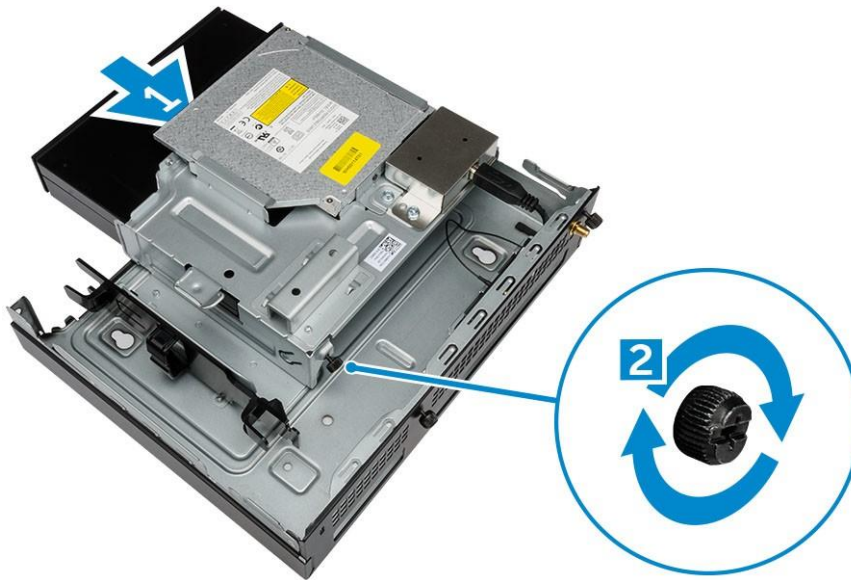
Installing the PowerMicro Console with DVD-RW

Recommended Fastener	Type	Use
	ST4 x 13 mm, Wood screw	Wooden table

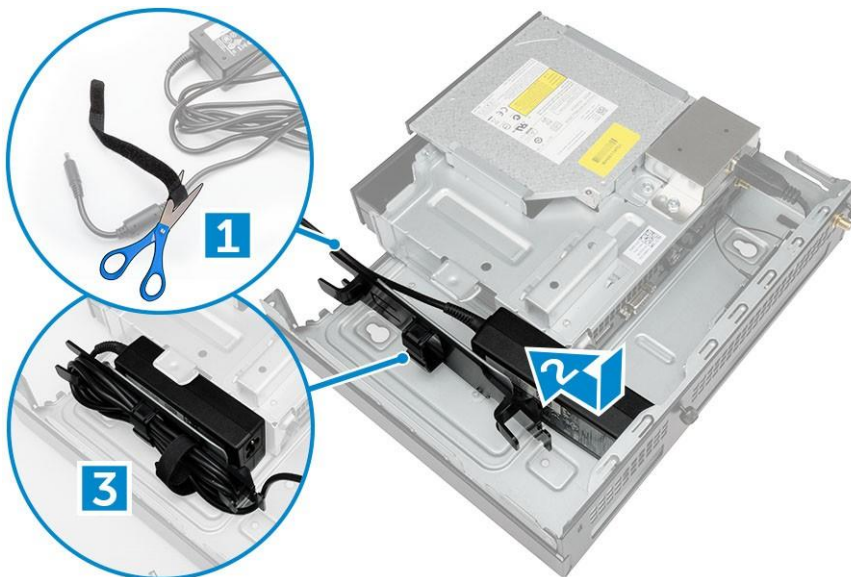
1. Perform the following steps as shown in the illustration:
 - a) Loosen the screws that secure the cover to the optical drive console [1].
 - b) Slide and lift the cover upwards to remove it from the console [2].



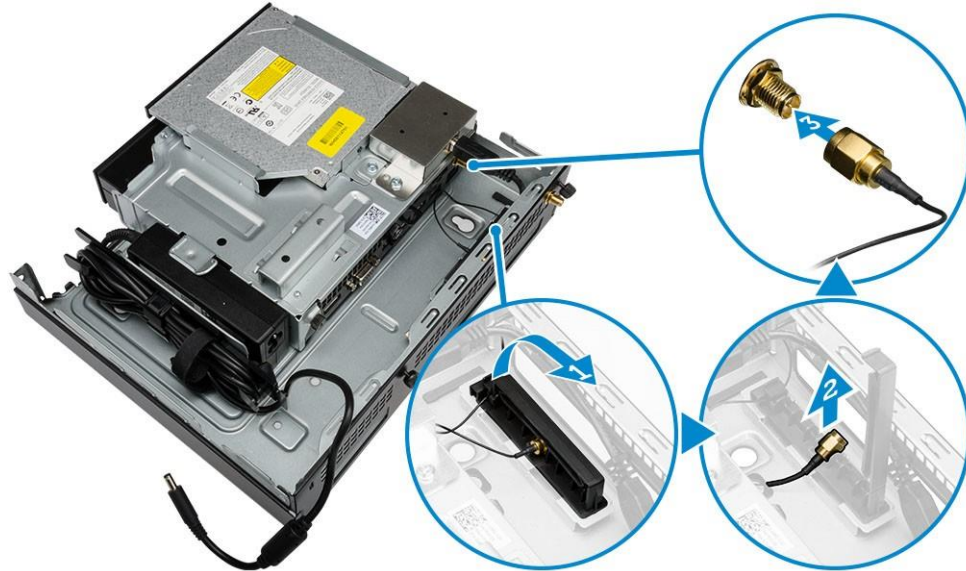
2. Perform the following steps as shown in the illustration:
 - a) Slide the computer into the slot [1].
 - b) Tighten the screw to secure the computer to the optical drive console [2].



3. Perform the following steps as shown in the illustration:
 - a) Cut the strap of the power adapter cable [1].
 - b) Slide and insert the power adapter into the slot [2].
 - c) Route the cable through the notch to secure it [3].



4. Perform the following steps as shown in the illustration:
 - a) Open the cable management clip [1].
 - b) Lift the antenna cable out [2].
 - c) Connect the antenna cable to the antenna connector [3].

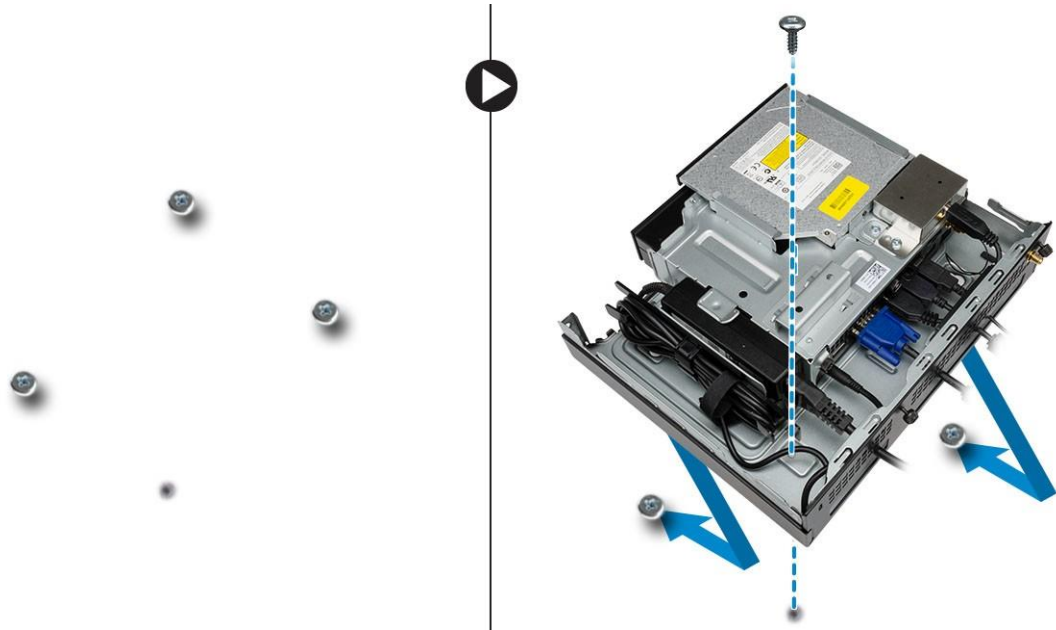


5. Route the USB cables through the cable management clip and connect them to the computer. Close the cable management clip.

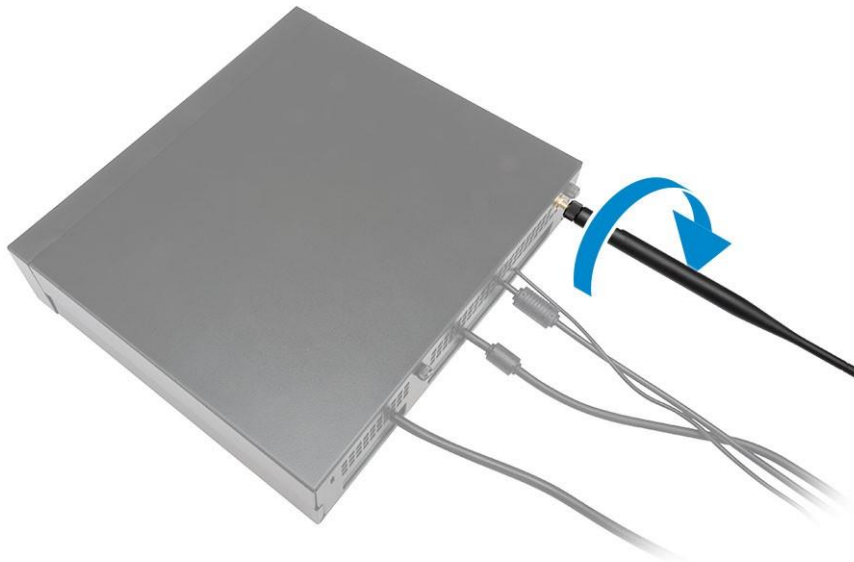


6. Perform the following steps as shown in the illustration:

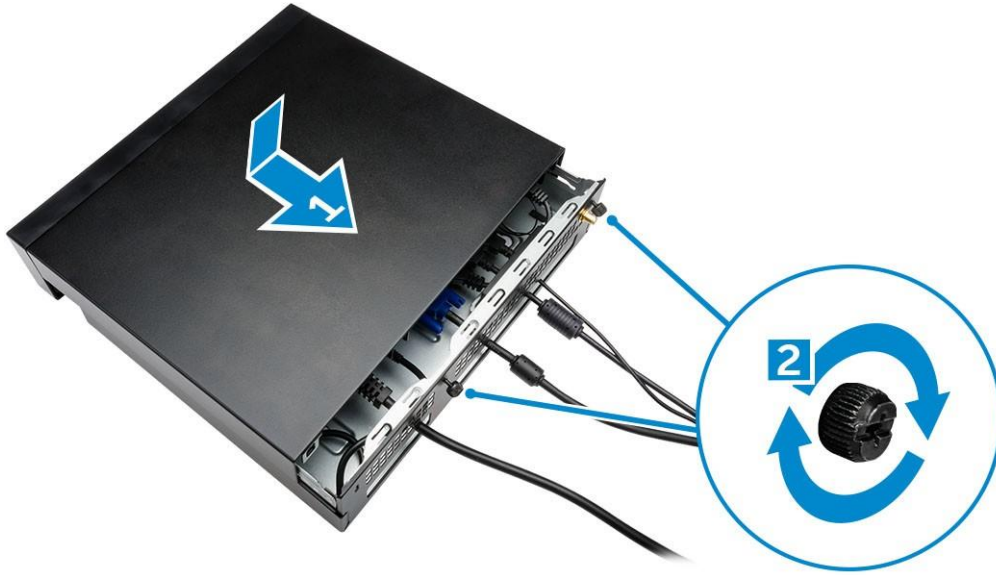
- a) Prepare the wooden table by installing screws for mounting the optical drive console.
- b) Align the slots on the optical drive console with the screws on the table and slide the optical drive console and lock it.
- c) Tighten the screws to secure the optical drive console to the wooden table.




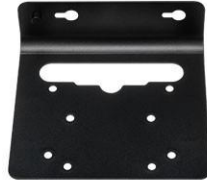






7. Install the antenna to the optical drive console.



8. Perform the following steps as shown in the illustration:
- Slide and insert the cover to its position [1].
 - Tighten the screws to secure the cover to the chassis [2].



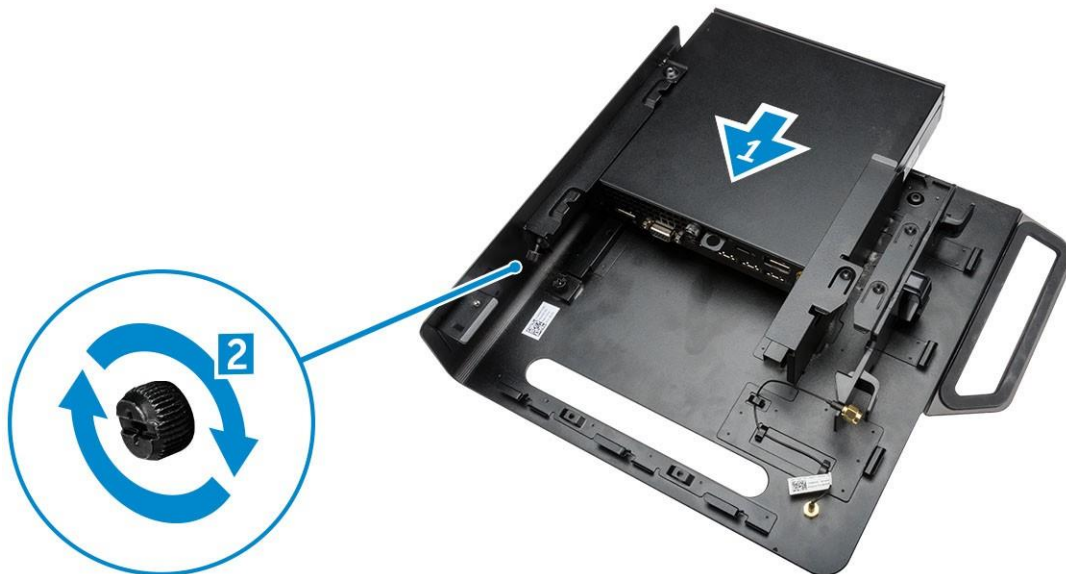
Installing the PowerMicro All-in-One Mount

Recommended Fastener	Type	Use
	M4 X L8 mm, pitch 0.7 mm, self- tapping screw	PUZ plate without thread screw holes— Dell P,U,PU,UZ- series monitors 
	M4 X L8 mm, pitch 0.5 mm, machine screw	PUZ plate with thread screw holes — Dell P,U,PU,UZ- series monitors 
	M3 X L8 mm, pitch 0.5 mm, self- tapping screw	E Plate without thread screw holes— Dell E-series monitors 
	M3 X L8 mm, pitch 0.35 mm, machine screw	E Plate with thread screw holes— Dell E-series monitors 

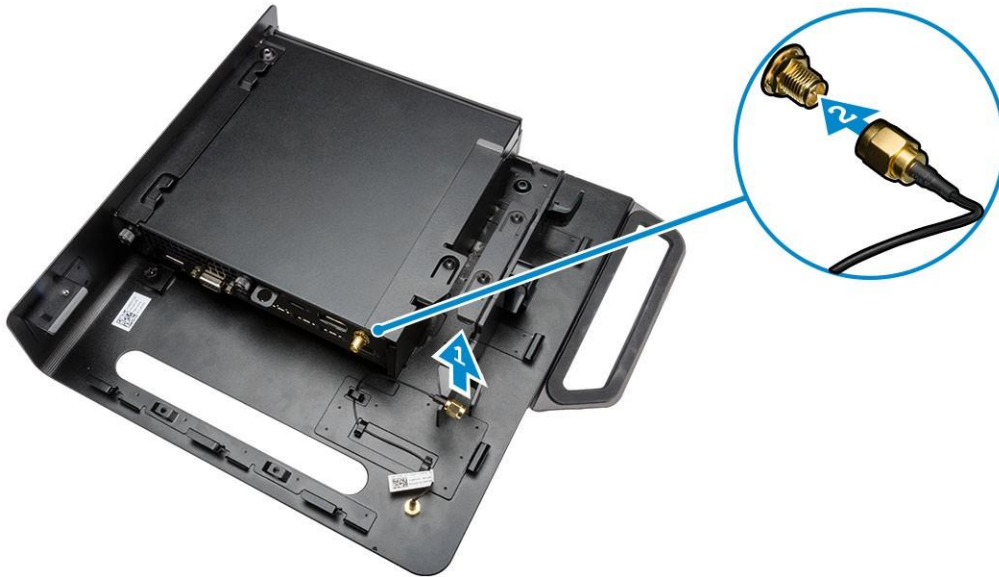
1. Perform the following steps as shown in the illustration:
 - a) Remove the screws that secure the cover to the chassis [1].
 - b) Slide and lift the cover upwards to remove it from the chassis [2].



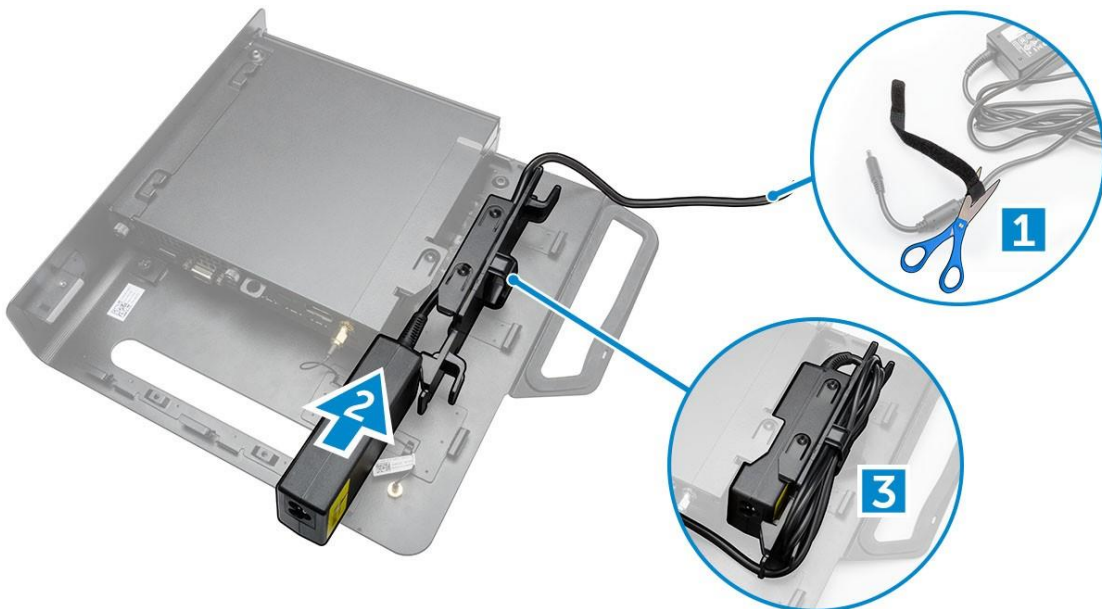
2. Perform the following steps as shown in the illustration:
 - a) Slide the computer into the slot [1].
 - b) Rotate the screw in clockwise direction to secure the computer to the chassis [2].



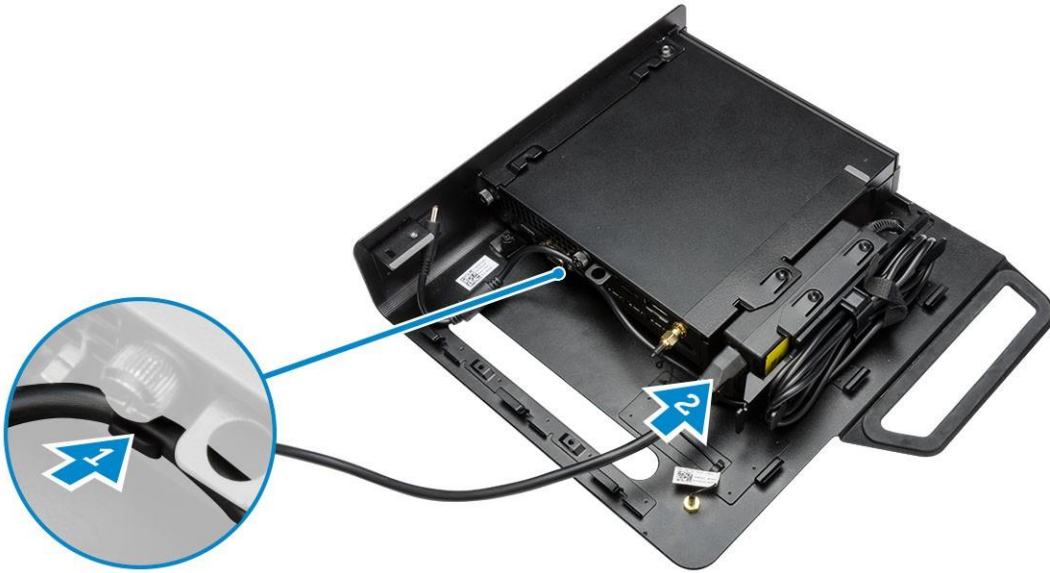
3. Perform the following steps as shown in the illustration:
- Lift up the antenna cable [1].
 - Connect the antenna cable to the antenna connector on the computer [2].



4. Perform the following steps as shown in the illustration:
- Cut the strap of power adapter cable [1].
 - Slide the power adapter into the slot [2].
 - Route the cable through the clip [3].



5. Perform the following steps as shown in the illustration:
- Route the cable through the clip [1].
 - Connect the cable to the adapter [2].

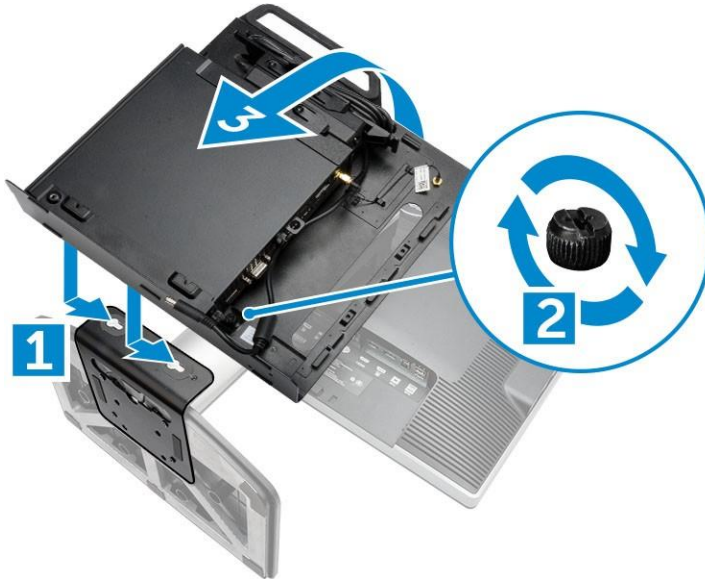


6. Align the PUZ plate to the bottom of monitor and tighten the screws.



7. Perform the following steps as shown in the illustration:

- a) Slide and lock the chassis to the PUZ plate [1].
- b) Rotate the screw in clockwise direction to secure the computer [2].
- c) Flip the computer along with the monitor [3].



8. Perform the following steps as shown in the illustration:

- a) Connect all the cables to the computer.
- b) Slide the cover to its original position [1].
- c) Tighten the screws to secure the cover to the chassis [2].

