
HOW TO RETRIEVE YOUR COMPLETEVIEW SERVER PRODUCT ID

COMPLETEVIEW VERSION 4.7.1

Contents

Retrieving your Server Product ID.....	1
Additional Resources.....	6

Retrieving your Server Product ID

The server Product ID is essential to generating server Licenses and Feature Keys.

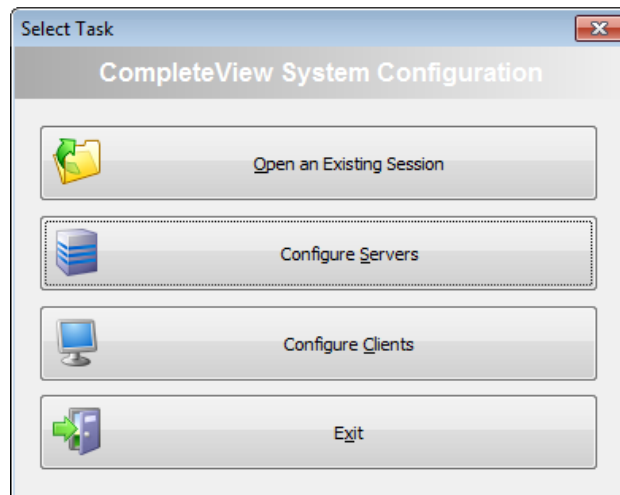
Once a server software installation is complete and licensed, the server Product ID can be accessed using the CompleteView Configuration Utility.

To access your server Product ID.:

1. Start the System Configuration Utility. Click **Start** and then click **All Programs**. Next click **CompleteView**, double-click **System Configuration**. The configuration utility *Select Task* dialogue will display:

STEP-1

Start>All Programs>CompleteView>System Configuration



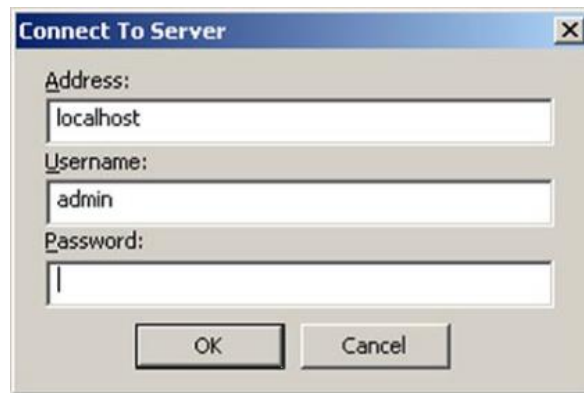
Click [Configure Servers]

Click [Configure Servers]. A *Connect to Server* dialogue will display.

2. In the *Connect to Server* dialogue, input the IP address of the target server and valid credentials for an administrator account on that server. If retrieving the Product ID for a server installed on the local machine, use the localhost address and default account credentials.

STEP-2

...>CompleteView>System Configuration>Server Configuration



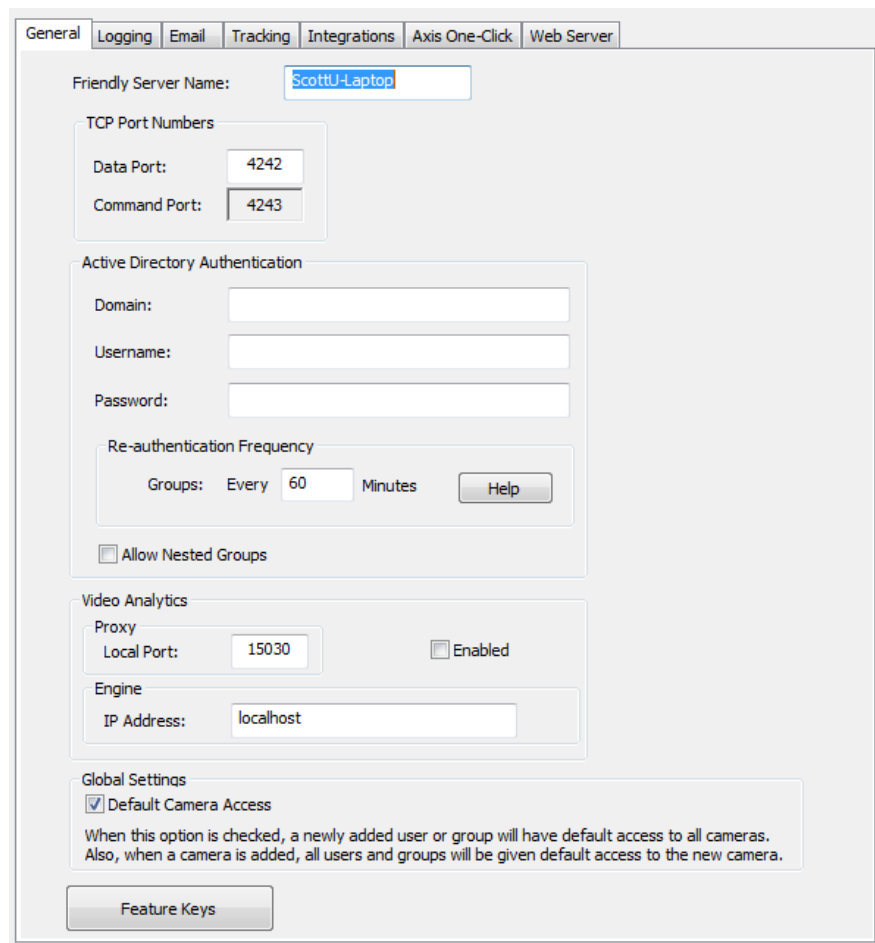
Log onto the localhost or remote server

Click [OK]. The CompleteView Server Configuration Console will display.

3. In the Server Configurations console tree, mouse over and click to select the target server configuration. The details pane of the Server Configuration Console will display a set of tabbed windows.

STEP-3

...>CompleteView>System Configuration>Server Configuration



The screenshot displays the 'Server Configuration' console with the 'General' tab selected. The 'Friendly Server Name' is 'ScottJ-Laptop'. Under 'TCP Port Numbers', the 'Data Port' is 4242 and the 'Command Port' is 4243. The 'Active Directory Authentication' section includes fields for 'Domain', 'Username', and 'Password', and a 'Re-authentication Frequency' section set to 'Every 60 Minutes'. There is an 'Allow Nested Groups' checkbox. The 'Video Analytics' section has a 'Proxy' section with 'Local Port' 15030 and an 'Enabled' checkbox. The 'Engine' section has an 'IP Address' field set to 'localhost'. The 'Global Settings' section has a checked 'Default Camera Access' checkbox. A 'Feature Keys' button is located at the bottom.

Select the target Server Configuration, <General> Tab

Click to select the **General** tab.

4. In the <General> tab of the selected Server Configuration, click the [Feature Keys] Button. A *Feature Keys* dialogue will display.

STEP-4

...>CompleteView>System Configuration>Server Configuration

The screenshot displays the 'Server Configuration' web interface, specifically the 'General' tab. The interface includes several sections for configuration:

- Friendly Server Name:** A text input field containing 'ScottU-Laptop'.
- TCP Port Numbers:** A section with two input fields: 'Data Port' set to '4242' and 'Command Port' set to '4243'.
- Active Directory Authentication:** A section with three input fields for 'Domain:', 'Username:', and 'Password:'. Below these is a 'Re-authentication Frequency' section with a 'Groups: Every 60 Minutes' label and a 'Help' button. There is also an unchecked checkbox for 'Allow Nested Groups'.
- Video Analytics:** A section with a 'Proxy' sub-section containing a 'Local Port' input field set to '15030' and an unchecked 'Enabled' checkbox. Below this is an 'Engine' sub-section with an 'IP Address' input field set to 'localhost'.
- Global Settings:** A section with a checked checkbox for 'Default Camera Access'. Below the checkbox is a descriptive text: 'When this option is checked, a newly added user or group will have default access to all cameras. Also, when a camera is added, all users and groups will be given default access to the new camera.'
- Feature Keys:** A button labeled 'Feature Keys' at the bottom of the configuration area.

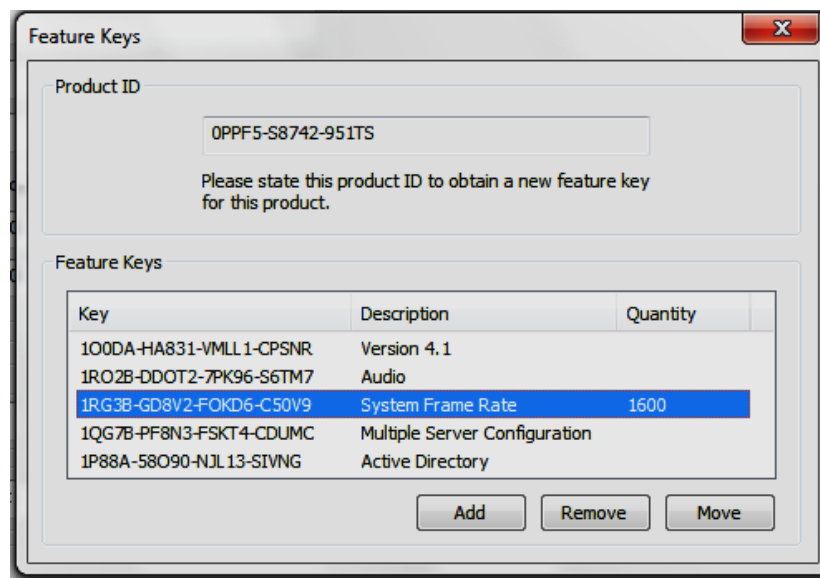
Click the [Feature Keys] button

5. In the Feature Keys Dialogue, make a note of the Product ID displayed in the upper portion of the display. The product ID may be copied and saved into a separate text file for future reference.

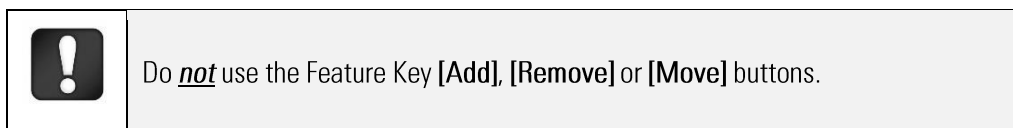
To exit the Feature Keys dialogue, click the red [X] in the upper right corner of the dialogue box.

Feature Keys Dialogue

...>CompleteView>System Configuration>Server Configuration



Note the Product ID then click the red [X] to exit



Additional Resources

Visit the Salient website, www.salientsys.com, for additional support and CompleteView training:

- **Manuals & Documentation** (<http://www.salientsys.com/support/manuals-and-documentation/>) – Includes Administrator’s Manual, Client User Manuals (including Video, Alarm and Web clients), How To Guides and Tips.
- **Online Tech Support** (<http://www.salientsys.com/support/>) – Get quick access to online tech support modules that cover the most frequently asked product questions, such as “Adding and Moving IP Camera Licenses.”
- **Training** <http://www.salientsys.com/support/training/> – we offer both online and classroom training.
 - CompleteView™ Online Certification - Register online for access to interactive training modules covering the Video, Alarm, Mapping and Web clients
 - CompleteView™ Classroom Certification - Our traditional classroom training is available throughout the United States. Please visit the Salient website for link to online training, training calendar, agenda and registration

Salient Systems

4616 W. Howard Ln.
Building 1, Suite 100
Austin, TX 78728
512.617.4800
512.617.4801 Fax
www.salientsys.com

