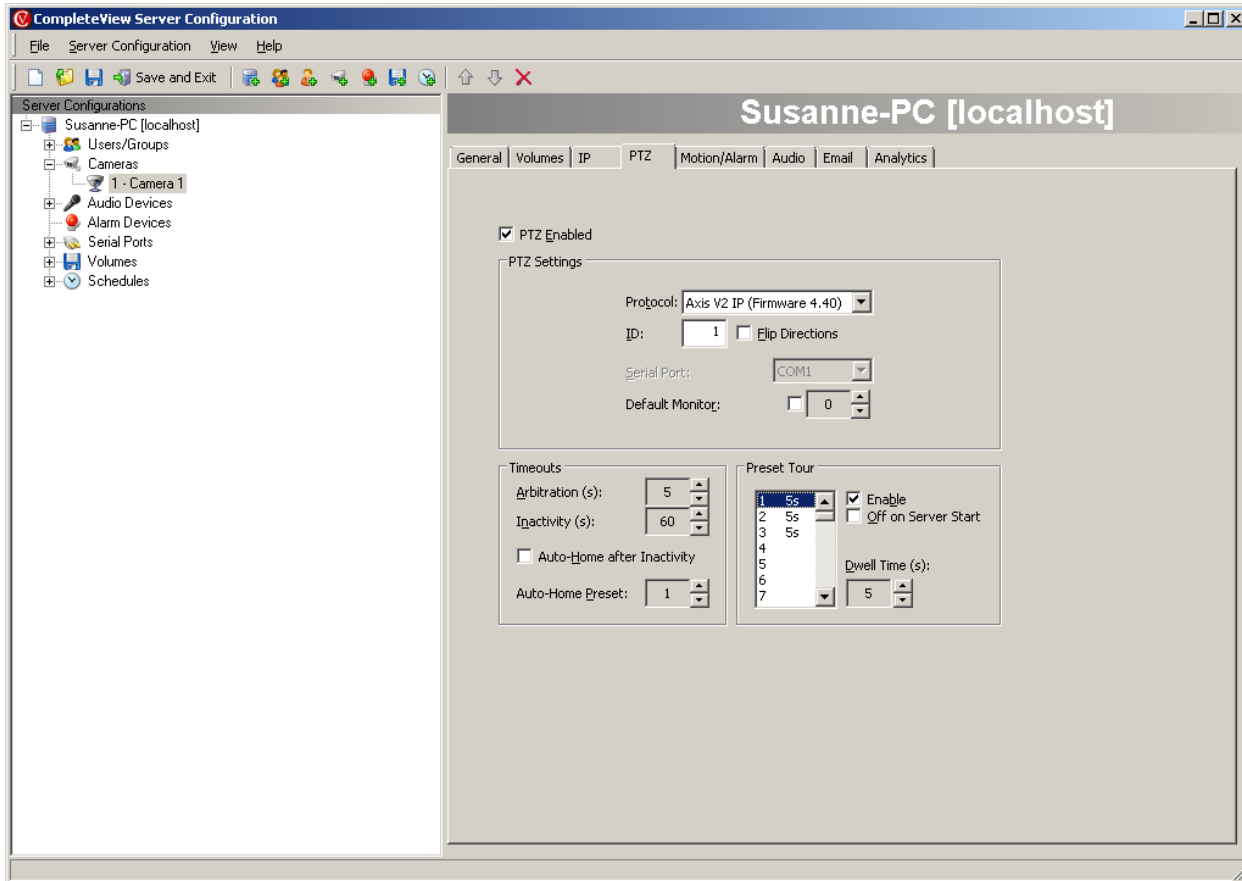


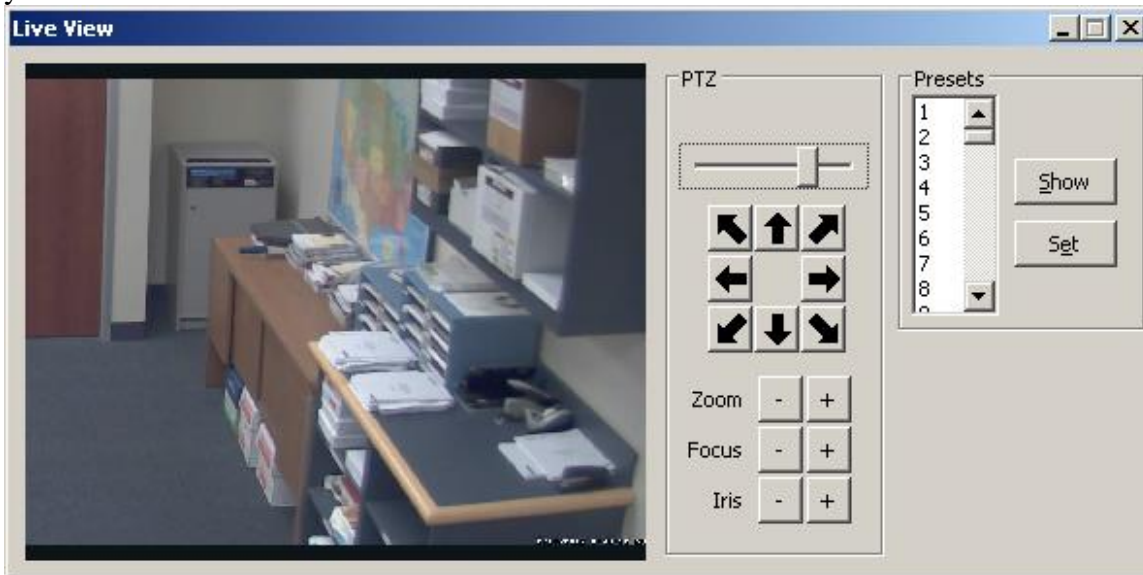
CompleteView Troubleshooting: How to Setup PTZ Preset Tours

Preset Tour

CompleteView allows you to automate your PTZ camera by enabling a *preset tour*. A preset tour consists of the PTZ camera alternating between two or more preset locations.



- Make sure to set all your presets before setting up the tour. To do this, right click on camera, then select live view from the menu. Setup the presets one at a time by selecting the preset # (1,2,3 etc) and clicking set, you can click show to make sure it worked.



1. **Enable Preset Tour** – Enables / Disables the preset tour.
2. **Preset Tour Off on Server Start** – If checked, CompleteView will not automatically start the preset tour when the server is first started.

To define a preset tour, begin by selecting the preset number that you wish to add to the tour. Next, set the dwell time for the preset location.

- Warning - Do not skip presets #s when creating your tour. This will cause the tour to hang, when it gets to the last preset before the skip.

Dwell Time (s) – Specifies the amount of time in seconds that CompleteView should wait at the preset location before proceeding to the next preset in the sequence.