
COMPLETEVIEW PAXTON NET2 INTEGRATION COMPONENT

COMPLETEVIEW VERSION 4.7.X

Table of Contents

- Introduction 3
- Installation 4
- Configuration and Setup 6
 - Adding a CompleteView Server 6
 - Associating CompleteView Cameras to Access Control Units
(Doors) 8
 - Playing recorded videos for events 9
- Troubleshooting 10
- Additional Resources 11

Introduction

The Salient CompleteView – Paxton Net2 integration is based on Paxton’s video integration platform and includes the following features:

- Ability to import CompleteView servers and cameras to Net2 Access Control.
- Ability to associate CompleteView Cameras to door (access control) units configured in Paxton Net2 server.
- Play recorded videos from CompleteView cameras pertaining to access control events.

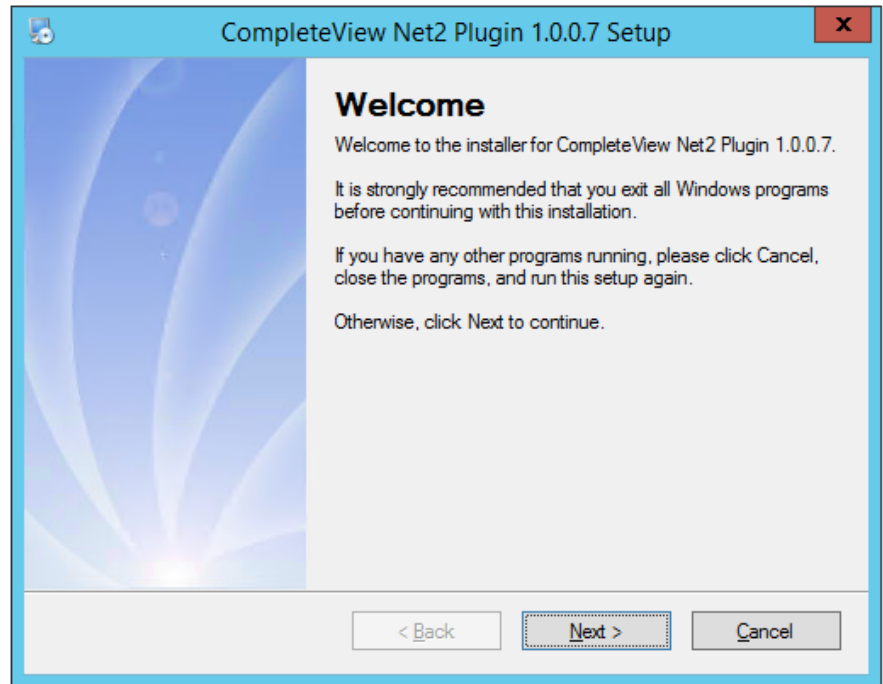
This guide provides the necessary steps to install and configure the CompleteView - Paxton Net2 integration component.

Installation

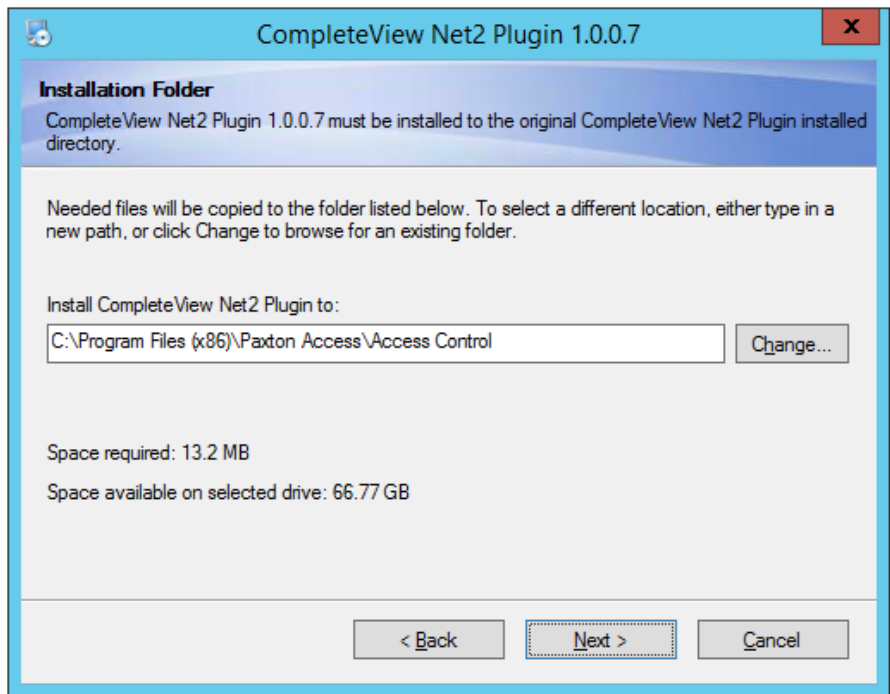
The CompleteView - Paxton Net2 Integration Component is installed on the computer hosting the Net2 Access Control software. No other CompleteView components need to be installed on the Net2 server.

Prior to installing the CompleteView – Paxton Net2 integration component make sure the Net2 access control server is installed on the target computer.

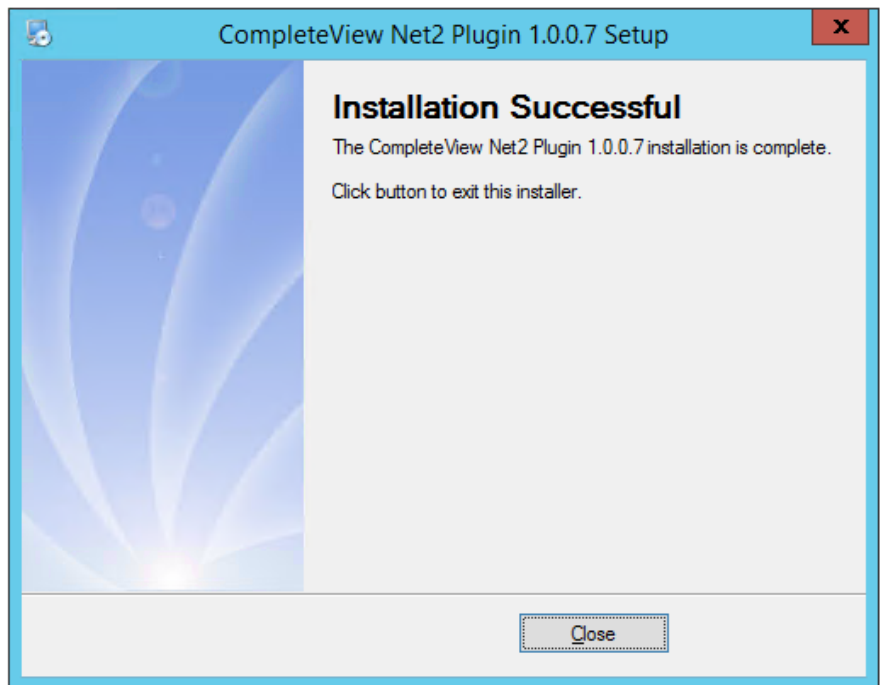
1. To begin installation run the CV-Net2-<version>.exe installation program



2. Click next and provide the Paxton installation path. Note - it is the user's responsibility to provide correct path of the Paxton Net2 installation, especially in case where the installation is not on C:



3. Click Next to complete the plugin installation

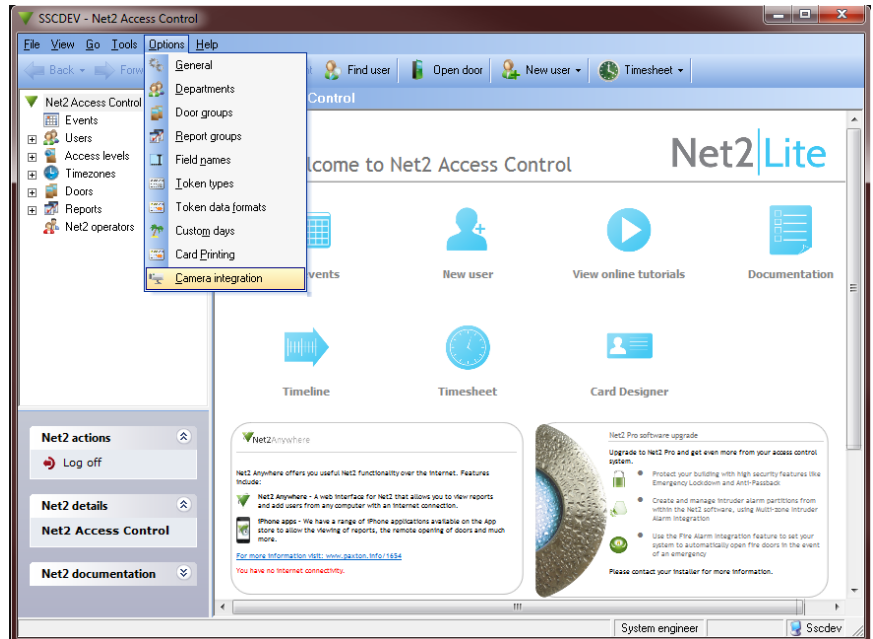


Configuration and Setup

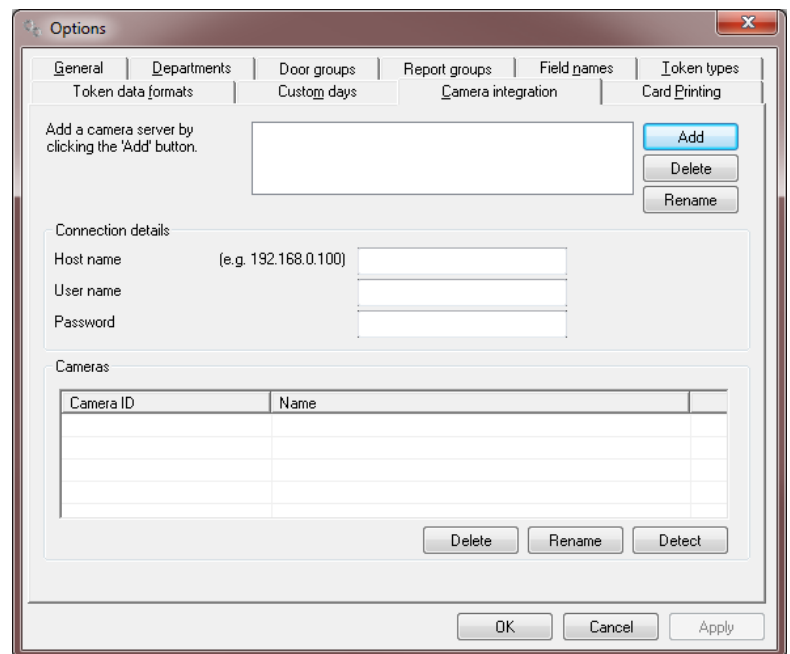
This section provides information on importing CompleteView Servers and Cameras to Net2 access control system. Further, it provides details on how CompleteView cameras can be associated to Net2 access control units.

Adding a CompleteView Server

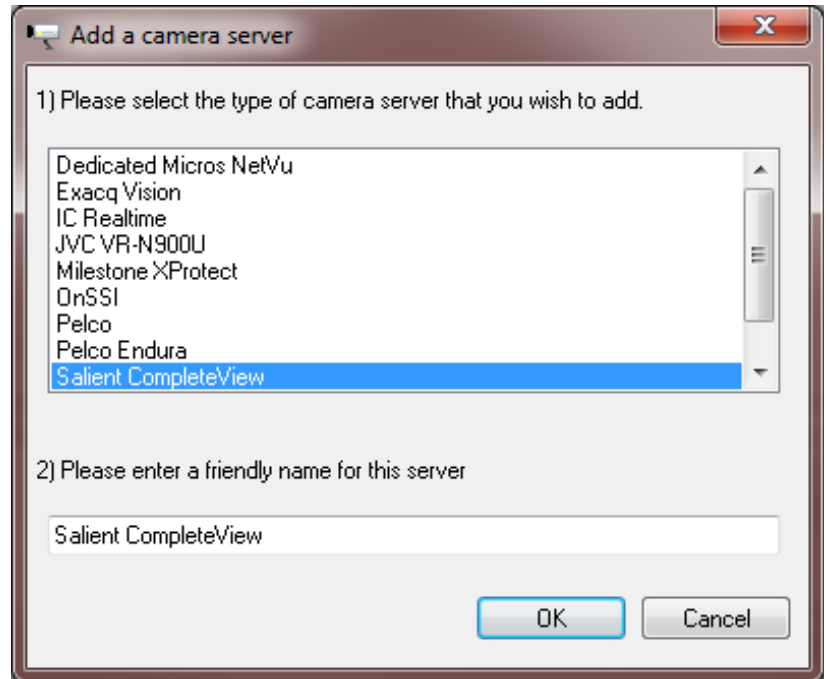
1. Start the Net2 Access Control from start menu and login to the Net2 server. Navigate to Options > Camera Integration.



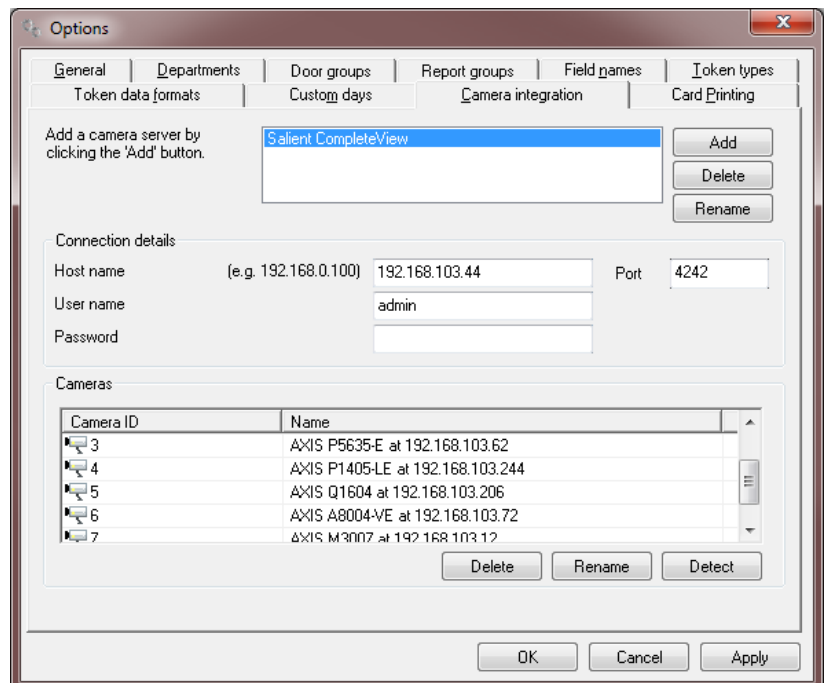
2. Click **Add** button to get the list of third party DVRs available to the Net2 server.



3. Select Salient CompleteView as the camera server and click OK.

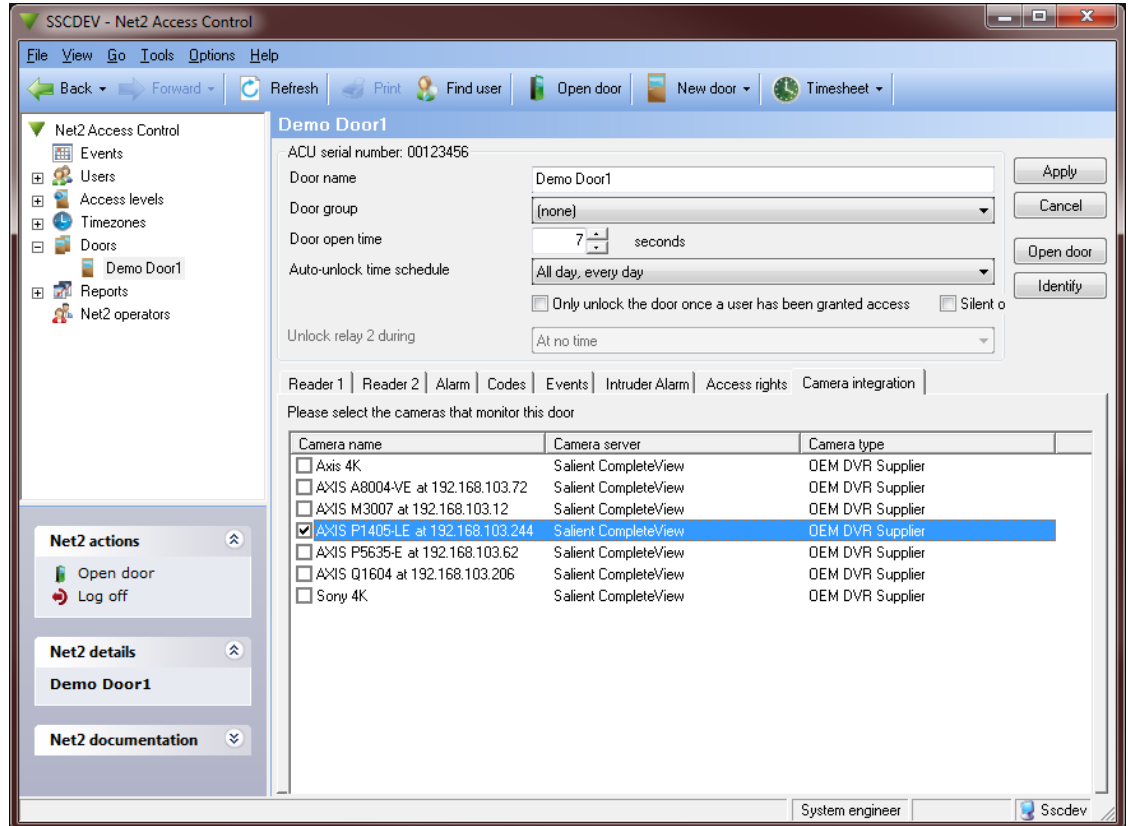


4. Provide the user credentials for the CompleteView user who has API permission and click **Detect** button. This will list all the cameras hosted on the CompleteView Server. Click Apply to save the configuration changes. This will import the CompleteView server and all its cameras to the Net2 access control configuration.



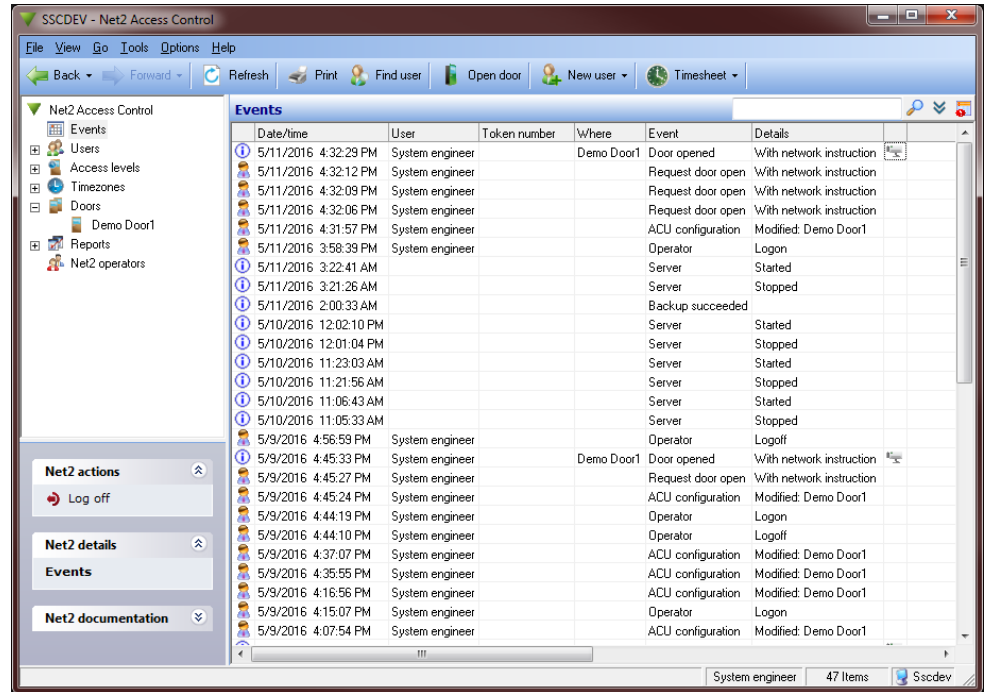
Associating CompleteView Cameras to Access Control Units (Doors)

Ensure a door is created under the Door's section in the Paxton access control. Select the door of interest and navigate to the Camera integration tab as shown below. Select the CompleteView camera of interest and click **Apply**.



Playing recorded videos for events

A camera icon will appear beside the event for doors which has cameras associated to them. Upon double clicking the corresponding camera icon recorded video pertaining to that event will be played.



The video being played is retrieved from CompleteView server and presented in a Net2 video player as shown below. In addition to play and pause the video, the playback speed of the video can be increased or decreased.



Troubleshooting

CompleteView server has been added, but cameras list does not get populated upon up on clicking 'Detect'.

Ensure firewall settings on the CompleteView server are properly configured, or Windows Firewall is turned off. Please refer to CompleteView Quick Start Guide Appendix A for Windows Firewall setup details. The CompleteView Quick Start Guide is provided with CompleteView installation.

Ensure the host name, user name and password are correct.

Ensure the account used by Net2 to access the CompleteView server has 'API access'. This is configured under the "Advanced" tab of the user account in the CompleteView Server Configuration application.

Ensure while adding the server the friendly name is kept as default - Salient CompleteView.

Additional Resources

Visit the Salient website, www.salientsys.com, for additional support and CompleteView training:

- **Manuals & Documentation** (<https://support.salientsys.com/hc/en-us/categories/115000292747-Knowledge-Base>) – Includes Administrator’s Manual, Client User Manuals (including Video, Alarm and Web clients), How To Guides and Tips.
- **Online Tech Support** (<https://support.salientsys.com/hc/en-us>)– Get quick access to online tech support modules that cover the most frequently asked product questions, such as “Adding and Moving IP Camera Licenses.”
- **Training** (<https://support.salientsys.com/hc/en-us/categories/115000302988-Training>)– we offer both online and classroom training.
 - CompleteView™ Online Certification - Register online for access to interactive training modules covering the Video, Alarm, Mapping and Web clients
 - CompleteView™ Classroom Certification - Our traditional classroom training is available throughout the United States. Please visit the Salient website for link to online training, training calendar, agenda and registration.

Salient Systems

4616 W. Howard Ln.
Building 1, Suite 100
Austin, TX 78728
512.617.4800
512.617.4801 Fax
www.salientsys.com

