



# VIEWPOINT USER GUIDE

ViewPoint VERSION 3.1



# Table of Contents

---

<b>Introduction</b> .....	<b>3</b>
<b>Installation of ViewPoint</b> .....	<b>4</b>
System Requirements .....	5
Installing ViewPoint: Installation Wizard .....	6
<b>ViewPoint Licensing</b> .....	<b>8</b>
Online Method: License Importation .....	9
Online Method: License Activation .....	11
Offline Method: Generating Offline Activation Request File & Binding the License File ...	13
Offline Method: Importing the Activation File .....	16
<b>ViewPoint Configuration</b> .....	<b>17</b>
Camera Settings .....	18
Video & Audio Settings .....	19
App Password .....	20
License information .....	21
<b>CompleteView Configuration</b> .....	<b>22</b>
<b>Adding a ViewPoint Camera in CompleteView</b> .....	<b>23</b>
<b>Additional Resources</b> .....	<b>26</b>

## INTRODUCTION

ViewPoint works in conjunction with CompleteView to stream a targeted PC's desktops or attached webcams as a video feed. Up to 8 desktops or webcams may be streamed from a single PC. CompleteView treats the streams as it would any physical IP camera, allowing for live viewing, playback, PTZ control, and all other functionality associated with a camera connected to CompleteView. ViewPoint comes pre-installed on any model of GuardStation in the PowerProtect line, but may also be purchased separately. ViewPoint is only available for use with Trial, Pro, and Enterprise editions of CompleteView.

This manual covers four primary topics:

- Installation of ViewPoint
- Licensing of ViewPoint
- Configuration of ViewPoint
- Configuration of CompleteView

A basic knowledge of standard Microsoft Windows functionality is presumed, as is operational knowledge of CompleteView.

## **INSTALLATION OF VIEWPOINT**

This section covers the installation of ViewPoint on the target PC. Installation consists of two main components:

- Installation of software dependencies
- ViewPoint installation

## System Requirements

ViewPoint requires:

- A PC running Windows 7 or newer (32 or 64 bit)
- .NET Framework\*
- Microsoft Visual C++ Redistributable Package\*
- Network Connectivity with Internet Access
- CompleteView version 4.7.3 or newer

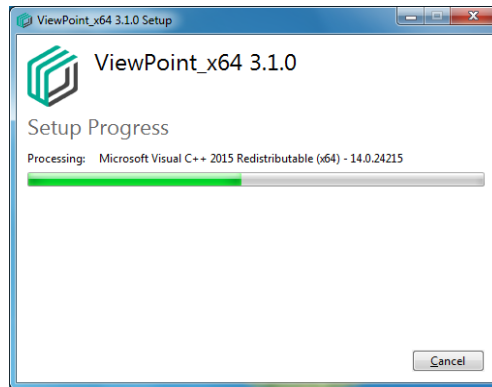
\*Both .NET and Visual C++ are included during the installation process.

## Installing ViewPoint: Installation Wizard

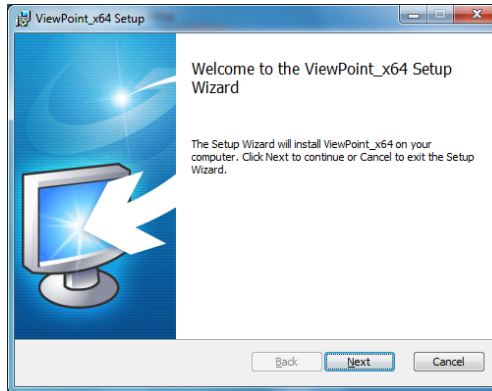
**Note:** Those performing offline installation, licensing, and configuration of ViewPoint must download and install the [Microsoft .NET Framework here](#) before proceeding with the Installation Wizard.

The ViewPoint Installation Wizard follows standard protocols, as detailed below. Save the installation file to the target PC, and double click it to begin. The Installation Wizard will automatically download and install software dependencies.

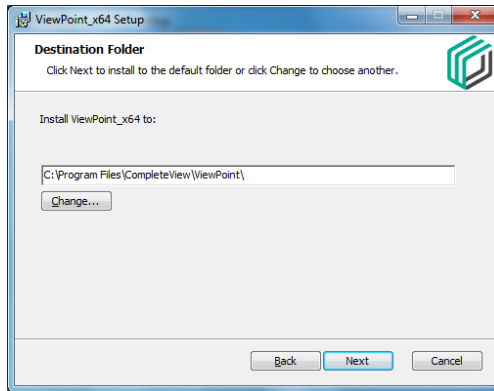
1. Double click the installation file.



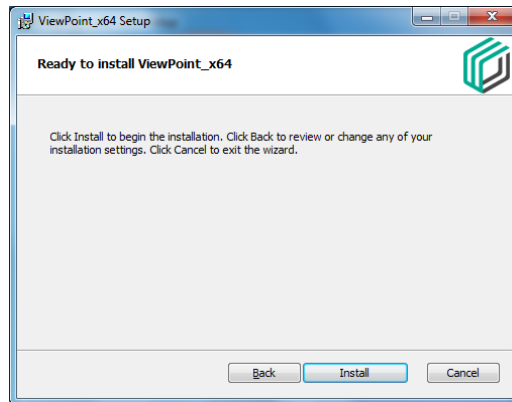
2. Click Next to continue.



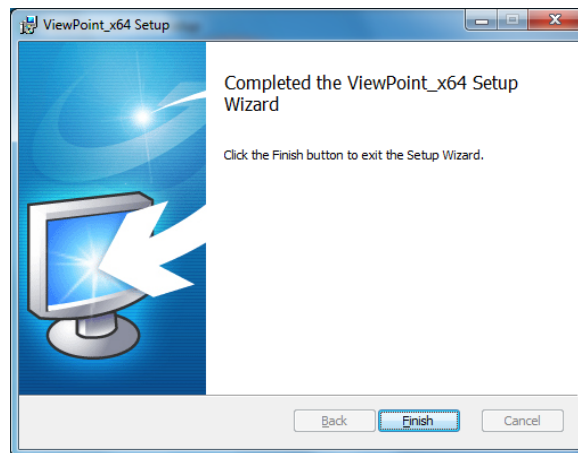
3. Select the installation path, and click Next.



4. After selecting the installation path, click Install to confirm the installation.



5. Installation progress will be displayed. When completed, click Finish.



6. ViewPoint installation is now complete.

## VIEWPOINT LICENSING

After successful installation of ViewPoint (and its dependencies), ViewPoint requires an activated license to function. There are two licensing methods; online licensing, and offline licensing. Online licensing takes place in two steps:

1. License importation
2. License activation (requires Internet connectivity on the target PC)

Offline licensing requires three:

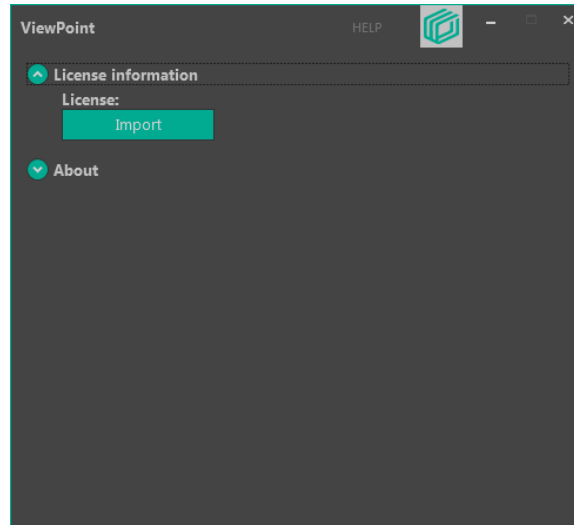
1. Generating Offline Activation Request file (.req) by ViewPoint
2. Binding Offline Activation Request file (.req) with License file (.lic) at the License Activation Portal
3. Importing Activated License (.act) to ViewPoint



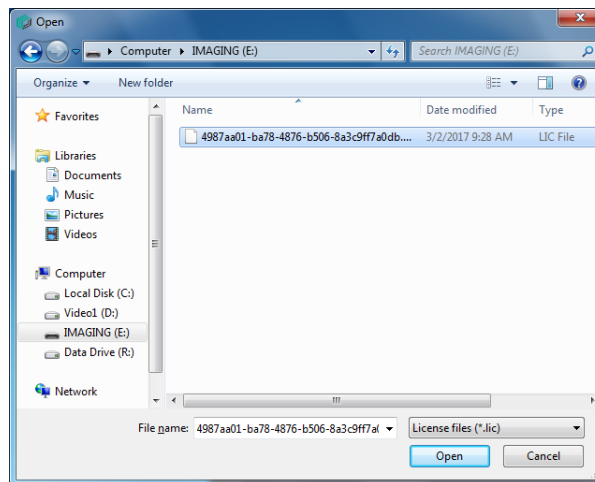
## Online Method: License Importation

After purchasing ViewPoint, a license file will be sent via email.

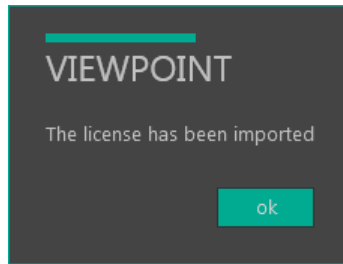
1. Save the license file to the target PC's local hard drive. Launch ViewPoint, if necessary, and select the License information section. Click Import.



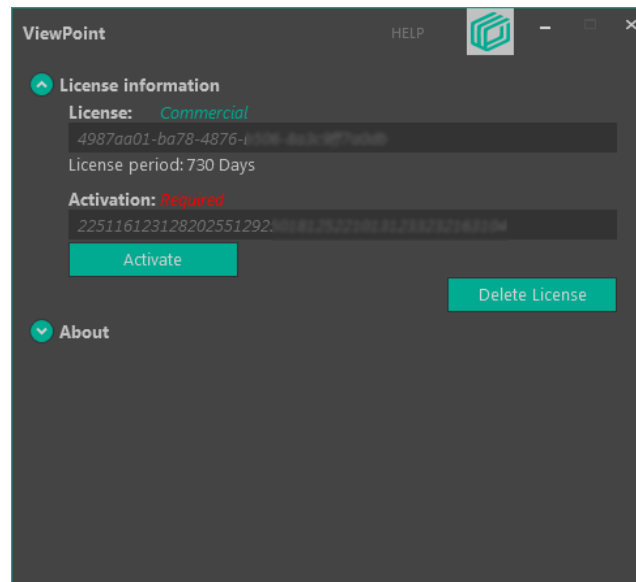
2. Browse to the location on the target PC's drive to which the license file was saved, and select it. Click Open.



3. A notification will be displayed upon successful importation of the file.



4. The License information section will now be populated with the newly imported license.

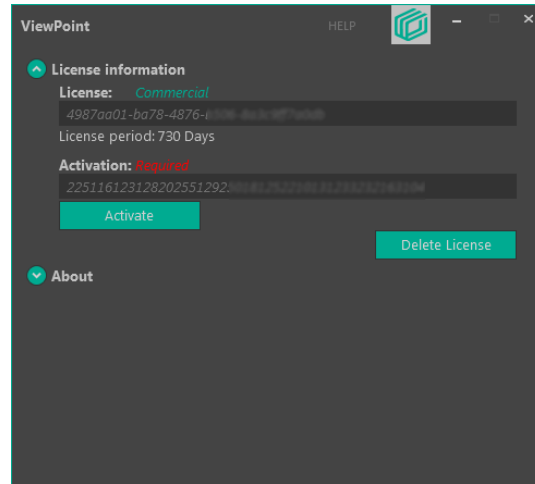


5. License importation is complete. It must now be activated.

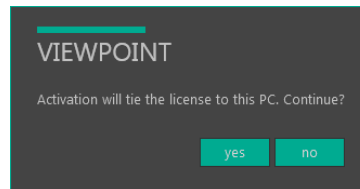
## Online Method: License Activation

After successfully importing ViewPoint's license, the license must be activated.

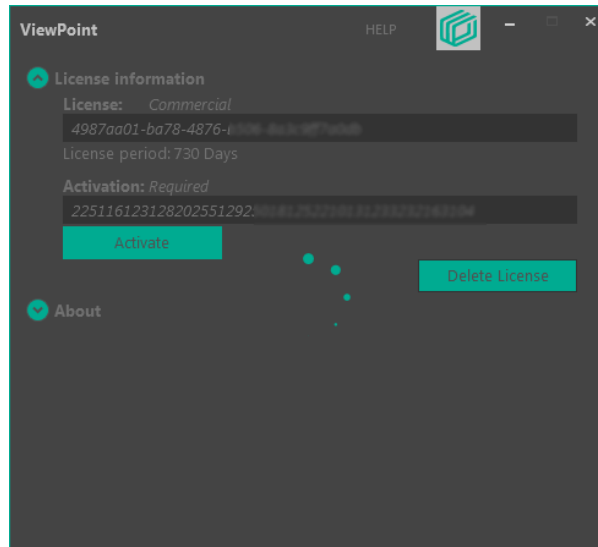
1. Click Activate to proceed.



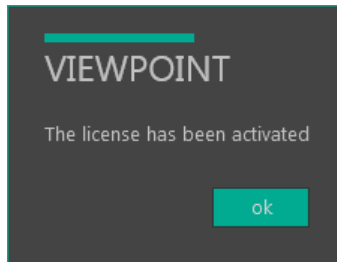
2. Click yes to proceed.



3. ViewPoint will then connect to the license servers and validate the imported license.



4. A notification will be displayed upon successful activation of the license.

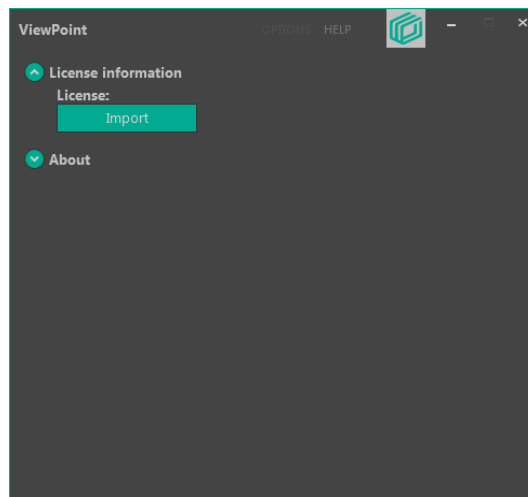


5. After successful activation, ViewPoint is ready for configuration.

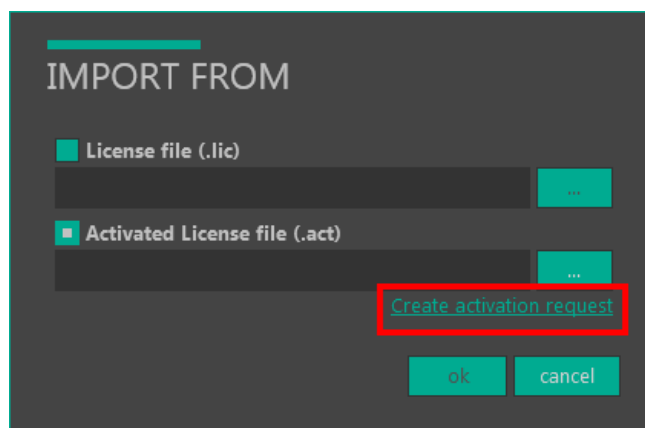
## Offline Method: Generating Offline Activation Request File & Binding the License File

The steps in the following 2 sections apply only to those who are unwilling or unable to activate ViewPoint via an internet connection on the machine on which it has been installed. A computer with an internet connection is still required to upload both the generated offline activation request and license files. These directions presume that the files will be saved to removable media (e.g. a USB drive), then used on a PC with internet connectivity. As in the online method, a license file will be sent by email after purchasing ViewPoint. Adjust the steps as reality dictates.

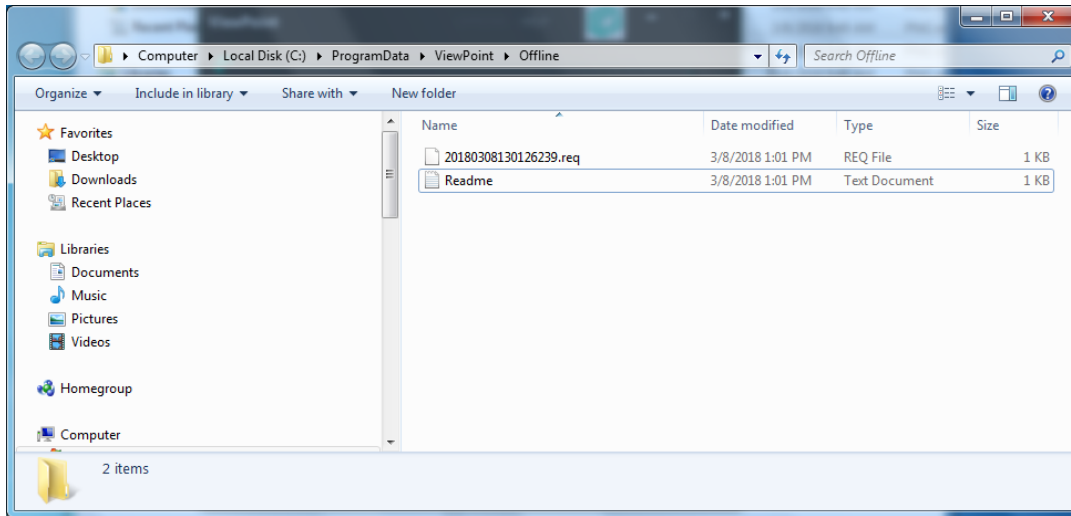
1. Save the license file (.lic) to the USB drive.
2. From ViewPoint's Licensing screen, click Import.



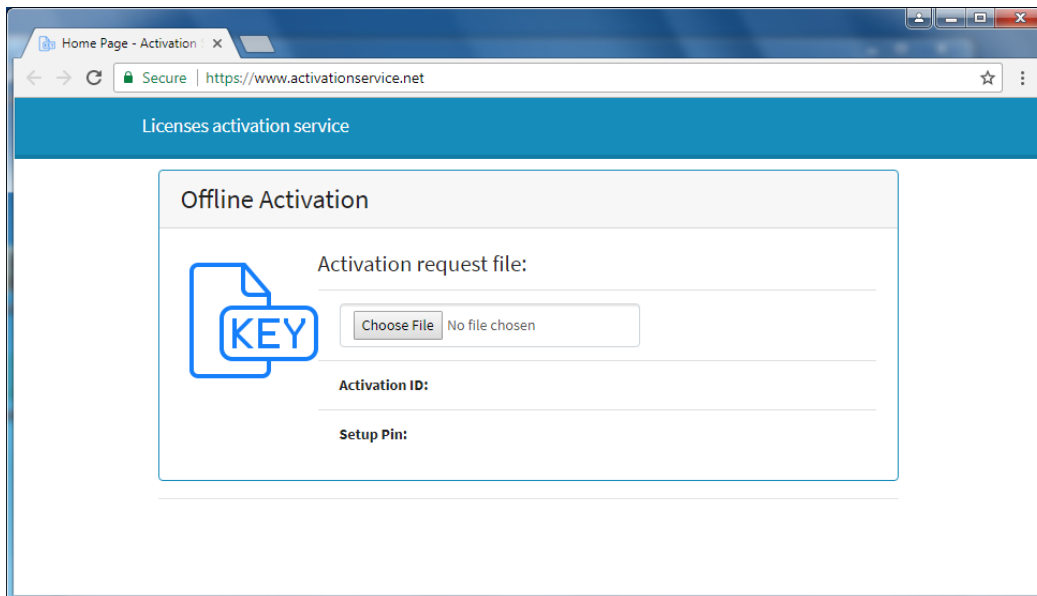
3. Select the Activated License File option, and click Create Activation Request.



4. Save the newly created .req file to the USB drive.




5. Safely eject the USB drive, move to a computer with internet connectivity, and insert the USB drive. From a browser, connect to the License Activation Portal at <https://www.activationservice.net/>.



6. Select Choose File, browse to the USB drive on which you saved the .req file, select it, and click Open. When prompted, upload the license file in the same manner. Check the "I understand..." box, and click Activate.

### Request details

 H008

---

**Activation ID:** 22511612312820255129250181252210131233232163104

---

**Setup Pin:** 6422

---

**Request Date:** 3/8/2018 7:01:25 PM

---

**License:**

4987aa01-ba7...9ff7a0db.lic

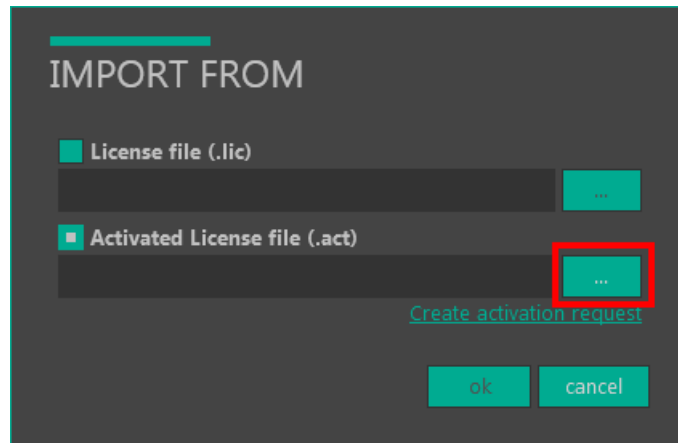
I understand that license will tie to the hardware and will only work with the PC where that request was generated

7. Save the generated .act file to the USB drive (some browsers will automatically begin download, some will prompt for a location to which the file should be saved).
8. Eject the drive. Continue to the next section.

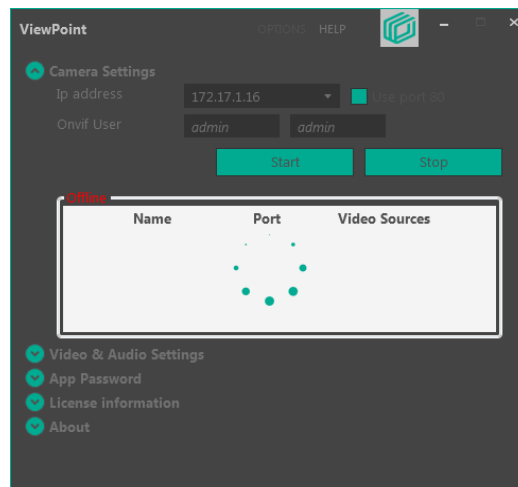
## Offline Method: Importing the Activation File

After the license (.lic) and request (.req) files have been bound, the License Activation Portal generates an activated license file (.act), which was saved to the USB drive.

1. Insert the USB drive into the machine on which ViewPoint was installed.
2. From the Import From screen click the ellipsis at the end of the Activated License file (.act) field.



3. Browse to and select the .act file downloaded from the License Activation Portal. Click Open. In the Import From screen, click Ok. The license will be validated.



4. ViewPoint is now activated and ready for configuration.



## VIEWPOINT CONFIGURATION

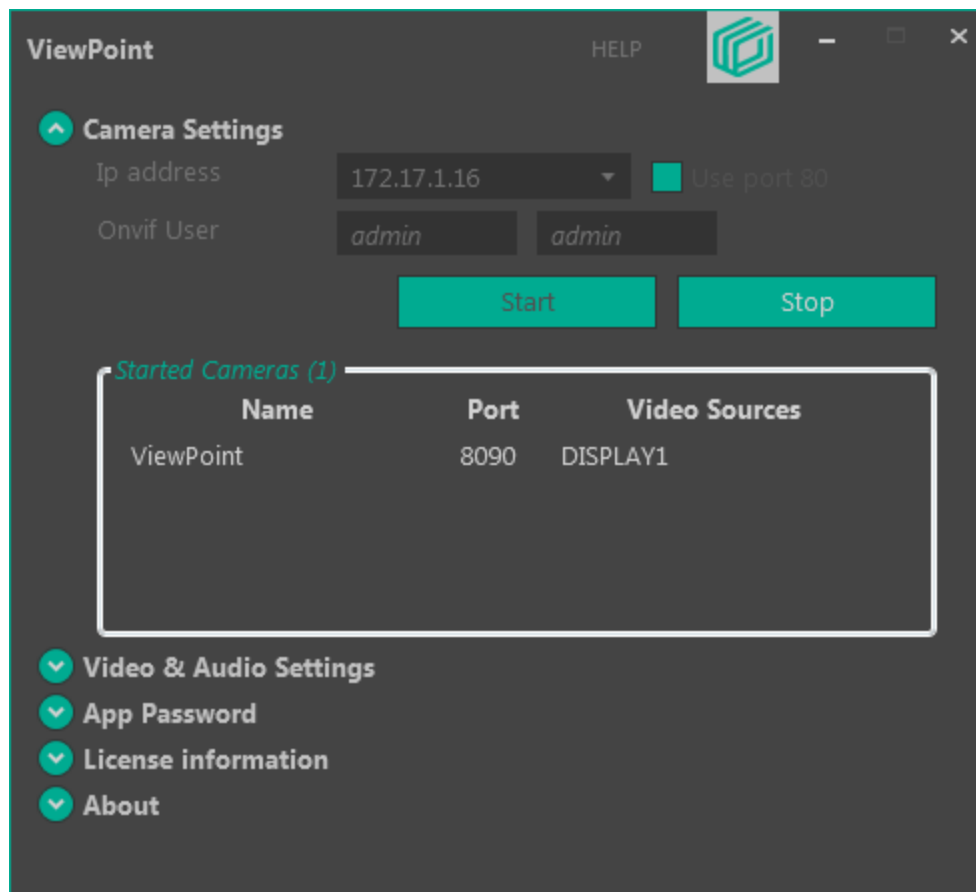
After successfully installing and licensing ViewPoint, its configuration may now be customized as desired. It's possible that no configuration will be required, as ViewPoint comes pre-configured to work with CompleteView after installation.

## Camera Settings

ViewPoint's Camera Settings section displays the IP address of the "camera" (the same address as the target PC), the ID and password of the ViewPoint (Onvif) User (preset to admin / admin ), as well as the Start and Stop camera stream buttons.

Supply the Onvif User credentials to CompleteView during setup. If desired, the ID and password maybe changed by stopping the camera stream, changing the credentials, and restarting the stream.

In addition, the list of camera streams emanating from the target PC are enumerated here, as well, along with their respective port information and Video Source name. Most target PCs will have only one "Started Camera".

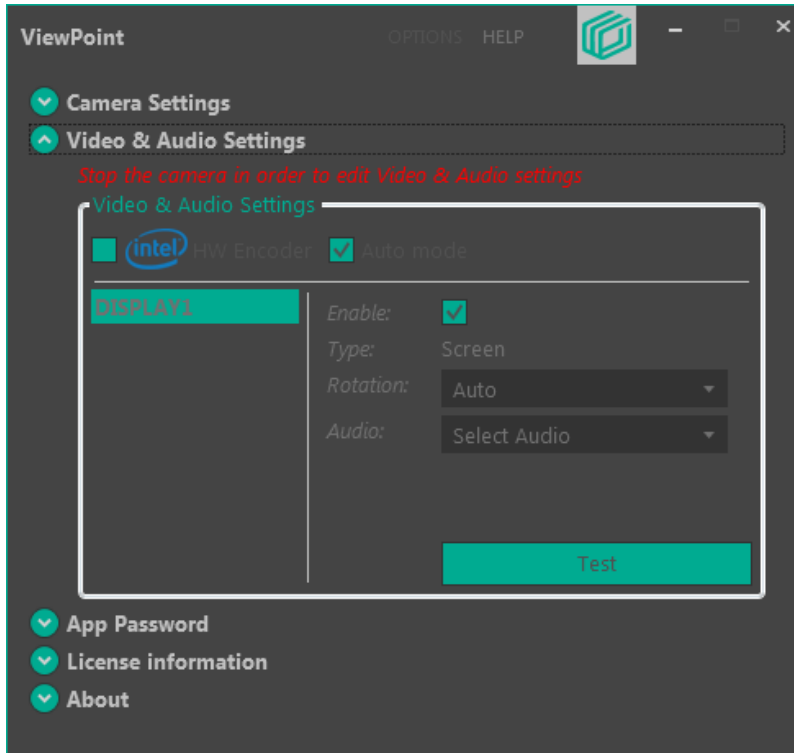


Before making any changes to ViewPoint's configuration, its video stream must be stopped. Click the Stop button to do so. After the desired changes have been made, click Start to resume the video stream.

In most cases, the default settings are appropriate for use with CompleteView.

## Video & Audio Settings

The Video & Audio Settings section allows selection of audio devices, if available, as well as video stream rotation. To make changes, stop the ViewPoint camera.

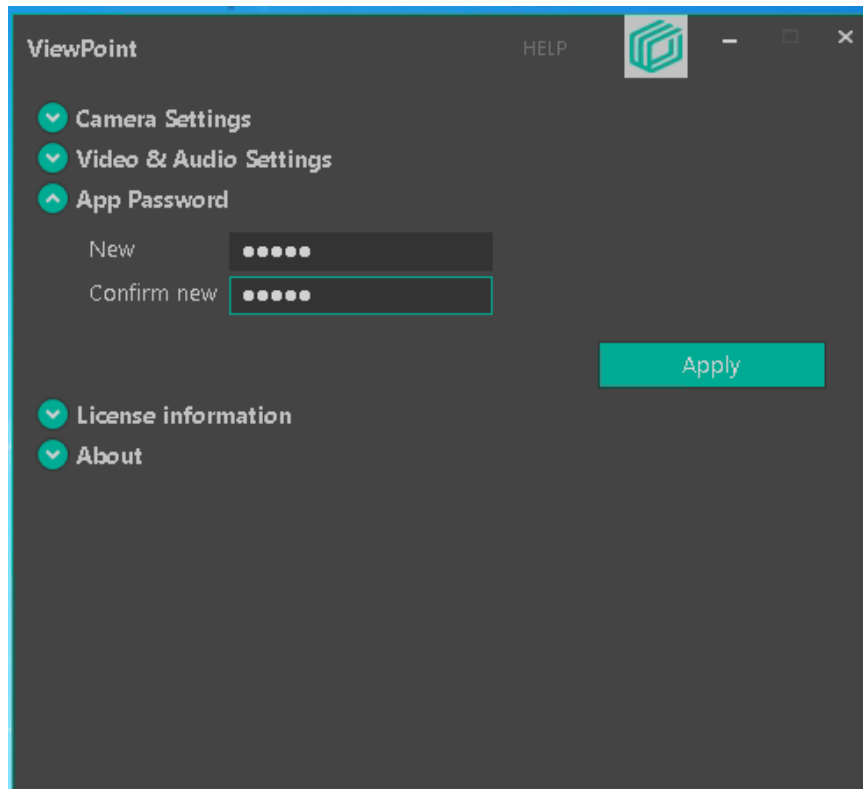


Selecting Auto Mode will stream the desktop as it appears on the native monitor, but 90 degree rotations, as well as horizontal and vertical flips are available, as well. Enabling intel HW Encoder will enhance the encoding of the video stream on PCs that support Intel Quick-Sync.

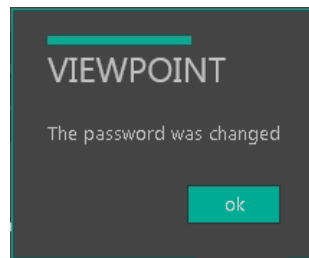
## App Password

As mentioned earlier, ViewPoint comes pre-configured with the ID and password set to admin / admin. For security reasons, it is strongly advised that the password be changed. Note that the password applies only to access to the local installation of ViewPoint, and not the camera setup in CompleteView.

Select the App Password section. Enter the current password (if prompted to do so), then enter the new, more secure password, once in the New field and again in the Confirm new field. Click Apply.

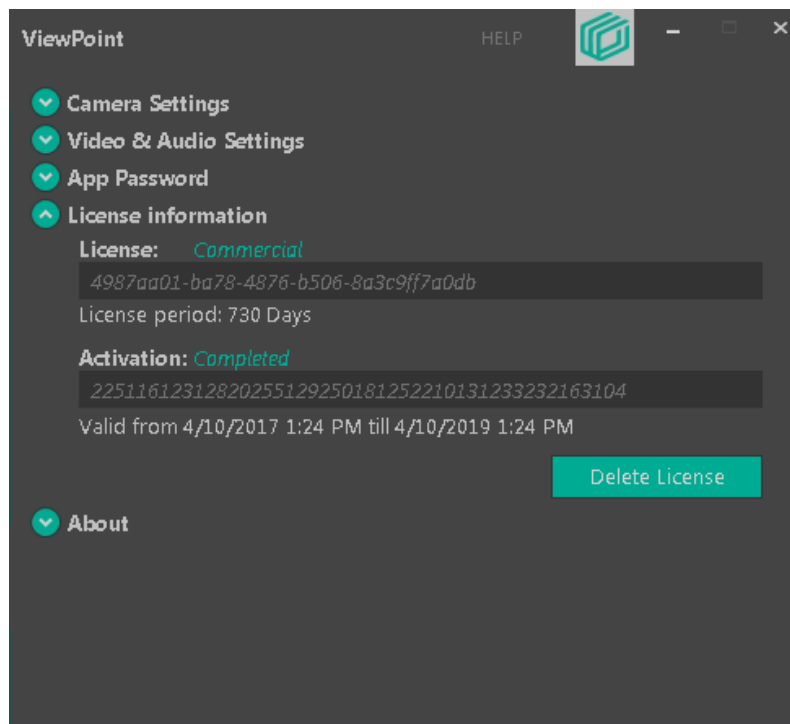


After successfully changing the password, a notification will appear.



## License information

The License information section details the license type, activation status, and validity.



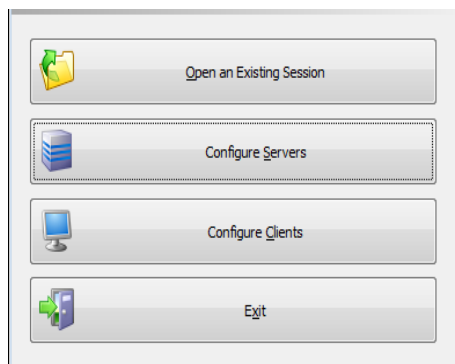
## **COMPLETEVIEW CONFIGURATION**

CompleteView handles ViewPoint like any other IP camera. Basic understanding of CompleteView functionality is presumed, but detailed below are the steps required to add a ViewPoint desktop stream from a target PC.

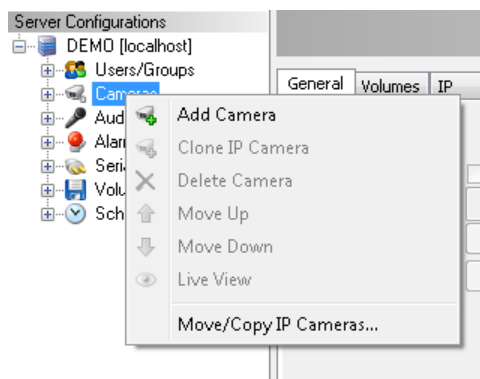
Once again, CompleteView version 4.7.3 or newer is required to function with ViewPoint.

## ADDING A VIEWPOINT CAMERA IN COMPLETEVIEW

Launch CompleteView System Configuration, select Configure Servers, and log into the appropriate server.

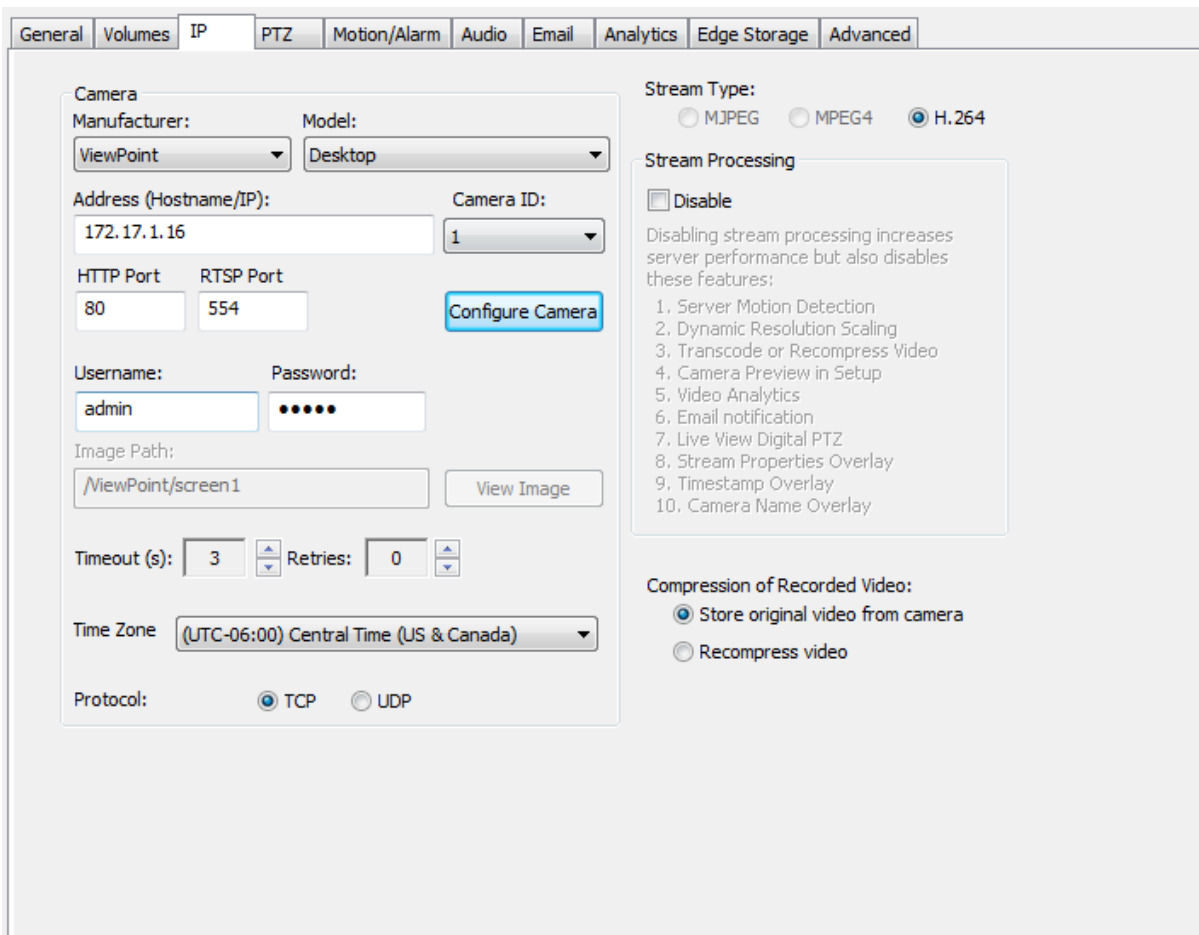


Right click on Cameras and choose Add Camera.

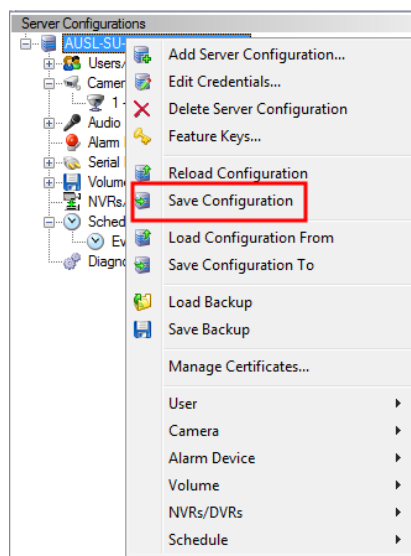


Enter a meaningful camera name, and click Ok.

Select the IP tab. In the Manufacturer drop down menu, select ViewPoint. In the Model drop down menu, select either Desktop or Webcam. Enter the IP address of the "camera" / target PC (as shown in the Ip address field of the Camera Settings section). Enter the Username and Password in the appropriate fields (default admin / admin). All other settings should left to defaults. Note that only H.264 video is supported from ViewPoint cameras at this time.



After entering the requisite information, save the configuration by right clicking the server name, and selecting Save Configuration.





The ViewPoint camera has now been added to CompleteView. Add the camera to views as you would any other camera in CompleteView. Consult CompleteView documentation for further explanation.

Note that only CompleteView users with administrative privileges may view or review video from a ViewPoint camera.

It should also be noted that the camera will only stream to CompleteView when a user is logged into the target PC. In addition, the framerate of the stream is preset and limited to 10fps.

## ADDITIONAL RESOURCES

Visit the Salient website, [www.salientsys.com](http://www.salientsys.com), for additional support and CompleteView training:

- Manuals & Documentation (<https://support.salientsys.com/hc/en-us/categories/115000292747-Knowledge-Base>) – Includes Administrator’s Manual, Client User Manuals (including Video, Alarm and Web clients), How To Guides and Tips.
- Online Tech Support (<https://support.salientsys.com/hc/en-us>) – Get quick access to online tech support modules that cover the most frequently asked product questions, such as “Adding and Moving IP Camera Licenses.”
- Training (<https://support.salientsys.com/hc/en-us/categories/115000302988-Training>) – we offer both online and classroom training.
  - CompleteView™ Online Certification - Register online for access to interactive training modules covering the Video, Alarm, Mapping and Web clients
  - CompleteView™ Classroom Certification - Our traditional classroom training is available throughout the United States. Please visit the Salient website for link to online training, training calendar, agenda and registration

**Salient Systems**  
4616 W. Howard Ln.  
Building 1, Suite 100  
Austin, TX 78728  
512.617.4800  
512.617.4801 Fax  
[www.salientsys.com](http://www.salientsys.com)

