



# **AXIS A8004 CONFIGURATION GUIDE**

COMPLETEVIEW VERSION 4.8

# AXIS A8004 Configuration

Both the CompleteView Server and CV Spotlight must be configured to enable two-way audio communication using the AXIS A8004.

## CompleteView Server Configuration

Launch Server Configuration, and configure the A8004 according to the screen shot below. Verify that 'Use on-camera alerting' is selected before saving the configuration.

The screenshot shows the configuration page for an AXIS A8004-VE camera. The 'Manufacturer' is set to 'Axis' and the 'Model' is 'A8004-VE'. The 'Stream Type' is set to 'H.264'. The 'Address (Hostname/IP)' is '192.168.105.36'. The 'HTTP Port' is '80' and the 'RTSP Port' is '554'. The 'Username' is 'root' and the 'Password' is masked with '\*\*\*\*'. The 'Image Path' is '/h264'. The 'Timeout (s)' is '3' and 'Retries' is '0'. The 'Time' zone is '(UTC-06:00) Central Time (US & Canada)'. Under 'Stream Processing', the 'Disable' checkbox is checked. Under 'Compression of Recorded Video', 'Store original video from camera' is selected. The 'Use On-Camera Alerting' checkbox is checked. A 'Configure Alerts...' button is visible at the bottom right.

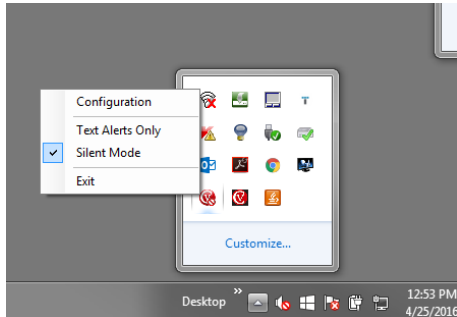
Click the 'Configure Alerts' button as shown in the screen shot above. Select 'Enable' for the 'Digital input port' as shown below. Click 'OK' when completed.

The screenshot shows the 'Camera Alarm Events' dialog box. It contains a table of alarm events with columns for 'Alarm', 'Recording', and 'Enabled'. The 'Digital input port' row is highlighted in blue and has 'Enabled' checked. The 'Recording Type' dropdown is set to 'Alarm' and the 'Enable Alarm' checkbox is checked. 'OK' and 'Cancel' buttons are at the bottom.

Alarm	Recording	Enabled
Above operating temperat...	Alarm	Disabled
Above or below operating...	Alarm	Disabled
Audio detection	Alarm	Disabled
Below operating temperat...	Alarm	Disabled
Camera tampering	Alarm	Disabled
Control Queue	Alarm	Disabled
Day night vision	Alarm	Disabled
Digital input port	Alarm	Enabled
Network lost	Alarm	Disabled
Scheduled interval	Alarm	Disabled
Storage available	Alarm	Disabled
Storage full	Alarm	Disabled
Storage locked	Alarm	Disabled
Storage read only	Alarm	Disabled
Storage removed	Alarm	Disabled
System Initializing	Alarm	Disabled
View Area 1	Alarm	Disabled
View Area 2	Alarm	Disabled
View Area 3	Alarm	Disabled
View Area 4	Alarm	Disabled
View Area 5	Alarm	Disabled
View Area 6	Alarm	Disabled
View Area 7	Alarm	Disabled
View Area 8	Alarm	Disabled
Virtual input	Alarm	Disabled
Within operating temperat...	Alarm	Disabled

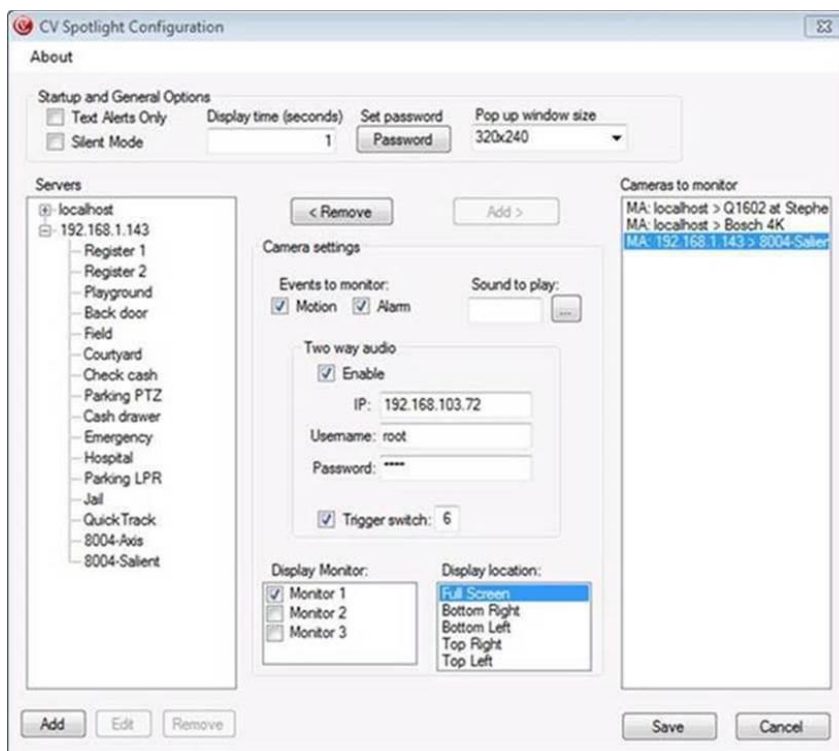
## CV Spotlight Configuration

Next, configure CV Spotlight. In Windows System Tray, right click the CV Spotlight icon and choose 'Configuration'.



Configure CV Spotlight as in the screen shot below:

1. Select the A8004, and choose 'Alarm' under 'Events to monitor'.
2. Select 'Enable' in 'Two way audio'.
3. Enter the IP, username, and password for the A8004 in the 'Two way audio' section. CV Spotlight communicates directly with the A8004, and therefore needs its IP address and credentials.
4. Enable 'Trigger switch,' and set the text box to '6' which is the output number the A8004 uses to open a door.



Click 'Save'. The configuration is now complete. Provided the output is wired correctly to the door lock, pop up video, two way audio communication, and ingress/egress control are now enabled.